

Anti-PHC1 antibody (750-940) (STJ28406)

GENERAL INFORMATION

Product Type	Primary antibodies
Applications	WB/ELISA
Host / Source	Rabbit
Reactivity	Human/Mouse/Rat

PRODUCT PROPERTIES

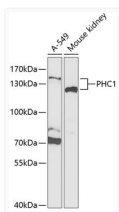
Clonality	Polyclonal
Concentration	Lot specific
Conjugation	Unconjugated
Purification	Affinity purification
Dilution Range	WB:1:500-1:2000 ELISA:Recommended starting concentration is 1 μ g/mL. Please optimize the concentration based on your specific assay requirements.
Formulation	PBS with 0.02% Sodium Azide, 50% Glycerol, pH 7.3.
Isotype	IgG
Molecular Weight	Protein Mw: 106kDa Observed Mw: 125kDa/135kDa
Storage Instruction	Store at -20°C for up to 1 year from the date of receipt, and avoid repeat freeze-thaw cycles.

TARGET INFORMATION

Gene ID	1911
Gene Symbol	PHC1
UniProt ID	PHC1_HUMAN
Immunogen Region	750-940
Immunogen Sequence	FPVGCSQLLKESEKPLQTGL PTGLTENQSGGPLGVDSPSA ELDKKANLLKCEYCGKYAPA EQFRGSKRFCSMTC AKRYNV SCSHQFRLKRRKMKKEFQEAN YARVRRRGPRRSSDIARAK IQGKCHRGQEDSSRGSDNSS YDEALSPTSPGPLSVRAGHG ERDLGNPNTAPPTPELHGIN PVFLSSNPSRW
Specificity	Recombinant fusion protein containing a sequence corresponding to amino acids 750-940 of human PHC1 (NP_004417.2).

ADDITIONAL INFORMATION

Note STRICTLY FOR FURTHER SCIENTIFIC RESEARCH USE ONLY (RUO). MUST NOT TO BE USED IN DIAGNOSTIC OR THERAPEUTIC APPLICATIONS.



Western blot analysis of extracts of various cell lines, using PHC1 Antibody (STJ28406) at 1:1000 dilution. Secondary antibody: HRP Goat Anti-Rabbit IgG (H+L) (STJS000856) at 1:10000 dilution. Lysates/proteins: 25 μ g per lane. Blocking buffer: 3% nonfat dry milk in TBST. Detection: ECL Enhanced Kit. Exposure time: 90s.