

## Anti-JMJD6 antibody (1-170) (STJ28403)

### GENERAL INFORMATION

Product Type	Primary antibodies
Applications	WB/IHC-P/IF/ICC/ELISA
Host / Source	Rabbit
Reactivity	Human/Mouse/Rat

### PRODUCT PROPERTIES

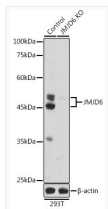
Clonality	Polyclonal
Concentration	Lot specific
Conjugation	Unconjugated
Purification	Affinity purification
Dilution Range	WB:1:500-1:2000 IHC-P:1:50-1:100 IF/CC:1:50-1:100 ELISA:Recommended starting concentration is 1 µg/mL. Please optimize the concentration based on your specific assay requirements.
Formulation	PBS with 0.05% Proclin300, 50% Glycerol, pH 7.3.
Isotype	IgG
Molecular Weight	Protein Mw: 46kDa Observed Mw: 46kDa/49kDa
Storage Instruction	Store at -20°C for up to 1 year from the date of receipt, and avoid repeat freeze-thaw cycles.

### TARGET INFORMATION

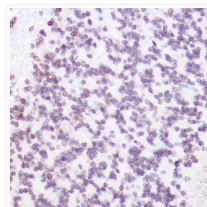
Gene ID	<a href="#">23210</a>
Gene Symbol	<a href="#">JMJD6</a>
UniProt ID	<a href="#">JMJD6_HUMAN</a>
Immunogen Region	1-170
Immunogen Sequence	MNHKSKKRIEAKRSARPEL KDSLDWTRHNYYESFSLSPA AVADNVERADALQLSVEEFV ERYERPYPVLLNAQEGWS AQEKWTLERLKRKYRNQKFK CGEDNDGYSVKMKMKYYIEY MESTRDDSPYIFDSSYGEH PKRRKLLLEDYKVPKFFTTDDL FQYAGEKRRP
Specificity	Recombinant fusion protein containing a sequence corresponding to amino acids 1-170 of human JMJD6 (NP_055982.2).

### ADDITIONAL INFORMATION

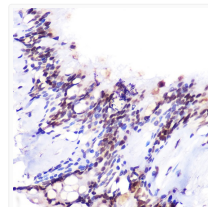
Note **STRICTLY FOR FURTHER SCIENTIFIC RESEARCH USE ONLY (RUO). MUST NOT TO BE USED IN DIAGNOSTIC OR THERAPEUTIC APPLICATIONS.**



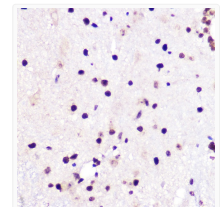
Western blot analysis of extracts of 293T cells, using JMJD6 antibody (STJ28403) at 1:1000 dilution. Secondary antibody: HRP Goat Anti-rabbit IgG (H+L) at 1:10000 dilution. Lysates/proteins: 25µg per lane. Blocking buffer: 3% nonfat dry milk in TBST. Detection: ECL Basic Kit. Exposure time: 180s.



Immunohistochemistry of paraffin-embedded rat brain using JMJD6 rabbit polyclonal antibody (STJ28403) at dilution of 1:100 (40x lens).



Immunohistochemistry of paraffin-embedded human lung using JMJD6 rabbit polyclonal antibody (STJ28403) at dilution of 1:100 (40x lens).



Immunohistochemistry of paraffin-embedded mouse spinal cord using JMJD6 rabbit polyclonal antibody (STJ28403) at dilution of 1:100 (40x lens).