

Anti-RHOT1 antibody (310-590) (STJ28401)

GENERAL INFORMATION

Product Type	Primary antibodies
Applications	WB/ELISA
Host / Source	Rabbit
Reactivity	Human/Mouse/Rat

PRODUCT PROPERTIES

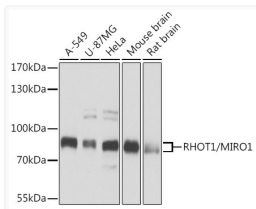
Clonality	Polyclonal
Concentration	Lot specific
Conjugation	Unconjugated
Purification	Affinity purification
Dilution Range	WB:1:2000-1:6000 ELISA:Recommended starting concentration is 1 Mu g/mL. Please optimize the concentration based on your specific assay requirements.
Formulation	PBS with 0.09% Sodium Azide, 50% Glycerol, pH7.3.
Isotype	IgG
Molecular Weight	Protein Mw: 71kDa Observed Mw: 80kDa/
Storage Instruction	Store at -20°C for up to 1 year from the date of receipt, and avoid repeat freeze-thaw cycles.

TARGET INFORMATION

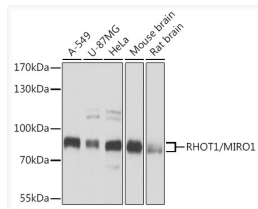
Gene ID	55288
Gene Symbol	RHOT1
UniProt ID	MIRO1_HUMAN
Immunogen Region	310-590
Immunogen Sequence	QSTFDKHLDRDCALSPDEL KDLFKVFPYIPWGPDPVNTV CTNERGWITYQGFLSQWTLT TYLDVQRCLLEYLGYLGYL TEQESQASAVTVTRDKKIDL QKKQTQRNVFRCNVIGVKNC GKSGVLQALLGRNLMRQKKI REDHKSYYAINTVYVYGQEK YLLLDHDISESEFLTEAEIIC DVVCLVYDVSNPKSFYCAR IFKQHFMDSRIPCLIVA AKS DLHEVKQEYSISPTDFCRK
Specificity	Recombinant fusion protein containing a sequence corresponding to amino acids 310-590 of human RHOT1/MIRO1 (NP_060777.3).

ADDITIONAL INFORMATION

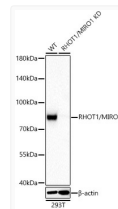
Note **STRICTLY FOR FURTHER SCIENTIFIC RESEARCH USE ONLY (RUO). MUST NOT TO BE USED IN DIAGNOSTIC OR THERAPEUTIC APPLICATIONS.**



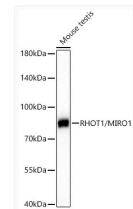
Western blot analysis of various lysates using [KD Validated] RHOT1/MIRO1 Rabbit pAb (STJ28401) at 1:1000 dilution.
Secondary antibody: HRP-conjugated Goat anti-Rabbit IgG (H+L) (STJS000856) at 1:10000 dilution.
Lysates/proteins: 25 Mu g per lane.
Blocking buffer: 3% nonfat dry milk in TBST.
Detection: ECL Basic Kit
Exposure time: 1s.



Western blot analysis of various lysates using [KD Validated] RHOT1/MIRO1 Rabbit pAb (STJ28401) at 1:1000 dilution.
Secondary antibody: HRP-conjugated Goat anti-Rabbit IgG (H+L) (STJS000856) at 1:10000 dilution.
Lysates/proteins: 25 Mu g per lane.
Blocking buffer: 3% nonfat dry milk in TBST.
Detection: ECL Basic Kit
Exposure time: 1s.



Western blot analysis of lysates from wild type (WT) and RHOT1/MIRO1 knockdown (KD) 293T cells using [KD Validated] RHOT1/MIRO1 Rabbit pAb (STJ28401) at 1:5000 dilution incubated overnight at 4C.
Secondary antibody: HRP-conjugated Goat anti-Rabbit IgG (H+L) (STJS000856) at 1:10000 dilution.
Lysates/proteins: 25 Mu g per lane.
Blocking buffer: 3% nonfat dry milk in TBST.
Detection: ECL Basic Kit
Exposure time: 60s.



Western blot analysis of lysates from Mouse testis using [KD Validated] RHOT1/MIRO1 Rabbit pAb (STJ28401) at 1:5000 dilution incubated overnight at 4C.
Secondary antibody: HRP-conjugated Goat anti-Rabbit IgG (H+L) (STJS000856) at 1:10000 dilution.
Lysates/proteins: 25 Mu g per lane.
Blocking buffer: 3% nonfat dry milk in TBST.
Detection: ECL Basic Kit
Exposure time: 60s.