

## Anti-PRMT2 antibody (1-300) (STJ28398)

### GENERAL INFORMATION

Product Type	Primary antibodies
Applications	WB/IHC-P/IF/ICC/ELISA
Host / Source	Rabbit
Reactivity	Human/Mouse/Rat

### PRODUCT PROPERTIES

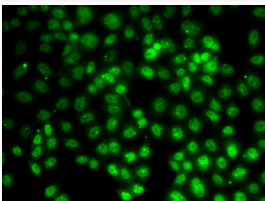
Clonality	Polyclonal
Concentration	Lot specific
Conjugation	Unconjugated
Purification	Affinity purification
Dilution Range	WB:1:500-1:2000 IHC-P:1:50-1:200 IF/ICC:1:50-1:100 ELISA:Recommended starting concentration is 1 Mu g/mL. Please optimize the concentration based on your specific assay requirements.
Formulation	PBS with 0.02% Sodium Azide, 50% Glycerol, pH 7.3.
Isotype	IgG
Molecular Weight	Protein Mw: 49kDa Observed Mw: 56kDa
Storage Instruction	Store at -20°C for up to 1 year from the date of receipt, and avoid repeat freeze-thaw cycles.

### TARGET INFORMATION

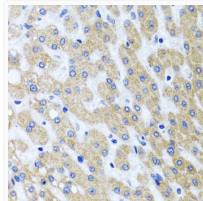
Gene ID	<a href="#">3275</a>
Gene Symbol	<a href="#">PRMT2</a>
UniProt ID	<a href="#">ANM2_HUMAN</a>
Immunogen Region	1-300
Immunogen Sequence	MATSGDCPRSESQGEPAEC SEAGLLQEGVQPEEFVAIAD YAATDETQLSFLRGEKILIL RQTTADWWWGERAGCCGYIP ANHVGKHVDEYDPEDTWQDE EYFGSYGTLKHLLEMLADQP RTTKYHSVILQNKESLTDKV ILDVGCGTGIISLFCAHYAR PRVYAVEASEMAQHTGQLV LQNGFADIITVYQQKVEDVV LPEKVDVLVSEWMGTCLLFE FMIESILYARDAWLKEDGV
Specificity	Recombinant fusion protein containing a sequence corresponding to amino acids 1-300 of human PRMT2 (NP_996845.1).

### ADDITIONAL INFORMATION

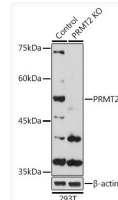
Note STRICTLY FOR FURTHER SCIENTIFIC RESEARCH USE ONLY (RUO). MUST NOT TO BE USED IN DIAGNOSTIC OR THERAPEUTIC APPLICATIONS.



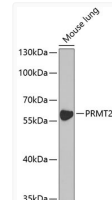
Immunofluorescence analysis of HeLa cells using [KO Validated] PRMT2 Rabbit polyclonal antibody (STJ28398). Secondary antibody: Cy3 Goat Anti-Rabbit IgG (H+L) at 1:500 dilution.



Immunohistochemistry analysis of PRMT2 in paraffin-embedded human liver damage using [KO Validated] PRMT2 Rabbit polyclonal antibody (STJ28398) at dilution of 1:100 (40x lens). Perform microwave antigen retrieval with 10 mM PBS buffer pH 7.2 before commencing with immunohistochemistry staining protocol.



Western blot analysis of lysates from wild type (WT) and PRMT2 knockout (KO) 293T cells, using [KO Validated] PRMT2 Rabbit polyclonal antibody (STJ28398) at 1:1000 dilution. Secondary antibody: HRP Goat Anti-Rabbit IgG (H+L) (STJS000856) at 1:10000 dilution. Lysates/proteins: 25 Mu g per lane. Blocking buffer: 3% nonfat dry milk in TBST. Detection: ECL Basic Kit. Exposure time: 90s.



Western blot analysis of lysates from mouse lung, using [KO Validated] PRMT2 Rabbit polyclonal antibody (STJ28398) at 1:1000 dilution. Secondary antibody: HRP Goat Anti-Rabbit IgG (H+L) (STJS000856) at 1:10000 dilution. Lysates/proteins: 25 Mu g per lane. Blocking buffer: 3% nonfat dry milk in TBST. Detection: ECL Enhanced Kit. Exposure time: 90s.