

Anti-KDM4B antibody (1-1096) (STJ28387)

GENERAL INFORMATION

Product Type	Primary antibodies
Applications	WB/ELISA
Host / Source	Rabbit
Reactivity	Human/Mouse

PRODUCT PROPERTIES

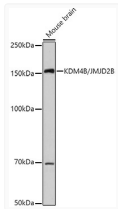
Clonality	Polyclonal
Concentration	Lot specific
Conjugation	Unconjugated
Purification	Affinity purification
Dilution Range	WB:1:500-1:1000 ELISA:Recommended starting concentration is 1 µg/mL. Please optimize the concentration based on your specific assay requirements.
Formulation	PBS with 0.09% Sodium Azide, 50% Glycerol, pH 7.3.
Isotype	IgG
Molecular Weight	Protein Mw: 122kDa Observed Mw: 150kDa
Storage Instruction	Store at -20°C for up to 1 year from the date of receipt, and avoid repeat freeze-thaw cycles.

TARGET INFORMATION

Gene ID	23030
Gene Symbol	KDM4B
UniProt ID	KDM4B_HUMAN
Immunogen Region	1-1096
Immunogen Sequence	MGSEDHGAQNPSCKIMTFRP TMEEFKDFNKYVAYIESQGA HRAGLAKIIPPKEWKPRQTY DDIDDVVIPAPIQQVVTGQS GLFTQYNIQKKAMTVGEYRR LANSEKYCTPRHQDFDDLK KYWKNLTFVSPYIGADISGS LYDDVAQWNIGSLRTILDM VERECGTIEGVNTPYLYFG MWKTTFAWHTEDMDLYSINY LHFGEPKSWYAIPEHGKRL ERLAIGFFPGSSQGCDLFL
Specificity	Recombinant fusion protein containing a sequence corresponding to amino acids 1-365 of human KDM4B/JMJD2B (NP_055830.1).

ADDITIONAL INFORMATION

Note **STRICTLY FOR FURTHER SCIENTIFIC RESEARCH USE ONLY (RUO). MUST NOT TO BE USED IN DIAGNOSTIC OR THERAPEUTIC APPLICATIONS.**



Western blot analysis of extracts of Mouse brain, using (STJ28387) at 1:1000 dilution. Secondary antibody: HRP Goat Anti-Rabbit IgG (H+L) (STJS000856) at 1:10000 dilution. Lysates/proteins: 25 µg per lane. Blocking buffer: 3% nonfat dry milk in TBST. Detection: ECL Basic Kit. Exposure time: 30s.