

Anti-PPP2R1A antibody (1-270) (STJ28363)

GENERAL INFORMATION

Product Type	Primary antibodies
Applications	WB/IF/ICC/ELISA
Host / Source	Rabbit
Reactivity	Human/Mouse/Rat

PRODUCT PROPERTIES

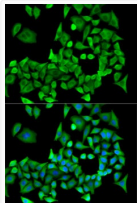
Clonality	Polyclonal
Concentration	Lot specific
Conjugation	Unconjugated
Purification	Affinity purification
Dilution Range	WB:1:500-1:2000 IF/ICC:1:10-1:100 ELISA:Recommended starting concentration is 1 Mu g/mL. Please optimize the concentration based on your specific assay requirements.
Formulation	PBS with 0.02% Sodium Azide, 50% Glycerol, pH 7.3.
Isotype	IgG
Molecular Weight	Protein Mw: 65kDa Observed Mw: 65kDa
Storage Instruction	Store at -20°C for up to 1 year from the date of receipt, and avoid repeat freeze-thaw cycles.

TARGET INFORMATION

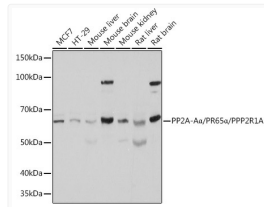
Gene ID	5518
Gene Symbol	PPP2R1A
UniProt ID	2AAA_HUMAN
Immunogen Region	1-270
Immunogen Sequence	MAAADGDDSLYPIAVLIDEL RNEDVQLRLNSIKKLTIAL ALGVERTRSELLPFLTDITY DEDEVLLALAEQLGTFITLV GGPEYVHCLLPPLSLATVE ETVVRDKAVESLRAISHEHS PSDLEAHFVPLVKRLAGGDW FTSRTSACGLFSVCYPRVSS AVKAE LRQYFRNLCSDDTPM VRRAAASKLGEFAKVLLEDN VKSEIIPMFSNLASDEQDSV RLLAVEACVNIAQLLPQED
Specificity	Recombinant fusion protein containing a sequence corresponding to amino acids 1-270 of human PP2A-Aalpha/PR65 Alpha/PP2A-A Alpha/PR65 Alpha/PPP2R1A (NP_055040.2).

ADDITIONAL INFORMATION

Note **STRICTLY FOR FURTHER SCIENTIFIC RESEARCH USE ONLY (RUO). MUST NOT TO BE USED IN DIAGNOSTIC OR THERAPEUTIC APPLICATIONS.**



Immunofluorescence analysis of U2OS cells using PP2A-Aalpha/PR65 Alpha/PP2A-A Alpha/PR65 Alpha/PPP2R1A antibody (STJ28363). Blue: DAPI for nuclear staining.



Western blot analysis of extracts of various cell lines, using PP2A-Aalpha/PR65 Alpha/PP2A-A Alpha/PR65 Alpha/PPP2R1A Polyclonal Antibody (STJ28363) at 1:500 dilution. Secondary antibody: HRP Goat Anti-Rabbit IgG (H+L) (STJS000856) at 1:10000 dilution. Lysates/proteins: 25 Mu g per lane. Blocking buffer: 3% nonfat dry milk in TBST. Detection: ECL Basic Kit. Exposure time: 1s.