

## Anti-ETV4 antibody (40-246) (STJ28361)

### GENERAL INFORMATION

|               |                       |
|---------------|-----------------------|
| Product Type  | Primary antibodies    |
| Applications  | WB/IHC-P/IF/ICC/ELISA |
| Host / Source | Rabbit                |
| Reactivity    | Human/Mouse/Rat       |

### PRODUCT PROPERTIES

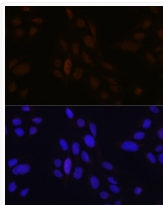
|                     |   |
|---------------------|---|
| Clonality           | Polyclonal  |
| Concentration       | Lot specific  |
| Conjugation         | Unconjugated  |
| Purification        | Affinity purification   |
| Dilution Range      | WB:1:500-1:1000<br>IHC-P:1:50-1:200<br>IF/ICC:1:50-1:200<br>ELISA:Recommended starting concentration is 1 Mu g/mL. Please optimize the concentration based on your specific assay requirements. |
| Formulation         | PBS with 0.09% Sodium Azide, 50% Glycerol, pH7.3.   |
| Isotype             | IgG   |
| Molecular Weight    | Protein Mw: 54kDa<br>Observed Mw: 54kDa   |
| Storage Instruction | Store at -20°C for up to 1 year from the date of receipt, and avoid repeat freeze-thaw cycles.  |

### TARGET INFORMATION

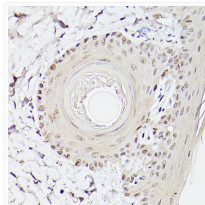
|                    |   |
|--------------------|---|
| Gene ID            | <a href="#">2118</a>  |
| Gene Symbol        | <a href="#">ETV4</a>  |
| UniProt ID         | <a href="#">ETV4_HUMAN</a>  |
| Immunogen Region   | 40-246  |
| Immunogen Sequence | MERRMKAGYLDQQVPYTFSS KSPGNGSLREALIGPLGKLM DPGSLPPLDSEDLFQDLSHF QETWLAEAQVPSDEQFVDP FHSENLAHFSPTRRIKKEPQ SPRTPALSCSRKPPLPYHH GEQCLYSSAYDPPRQIAIKS PARGALGQSP LQPPFRAEQR NFLRSSGTSQPHPGHGYLGE HSSVFQQPLDICHSFSTSQGG GREPLPAPYQHLSEPCPPY PQQSFKQEYHDPLYEQAGQ |
| Specificity        | Recombinant Protein corresponding to a sequence within amino acids 1-284 of human ETV4 (NP_001977.1).   |

### ADDITIONAL INFORMATION

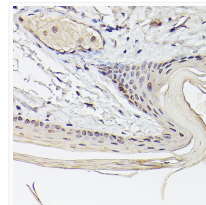
Note STRICTLY FOR FURTHER SCIENTIFIC RESEARCH USE ONLY (RUO). MUST NOT TO BE USED IN DIAGNOSTIC OR THERAPEUTIC APPLICATIONS.



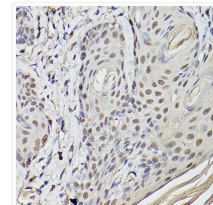
Immunofluorescence analysis of U-2 OS cells using Pea3/ ETV4 Rabbit polyclonal antibody (STJ28361) at dilution of 1:100 (40x lens). Secondary antibody: Cy3 Goat Anti-Rabbit IgG (H+L) at 1:500 dilution. Blue: DAPI for nuclear staining.



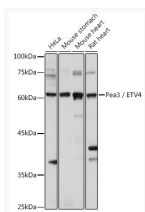
Immunohistochemistry analysis of Pea3/ ETV4 in paraffin-embedded Rat skin using Pea3/ ETV4 Rabbit polyclonal antibody (STJ28361) at dilution of 1:100 (40x lens). Perform high pressure antigen retrieval with 10 mM citrate buffer pH 6. 0 before commencing with immunohistochemistry staining protocol.



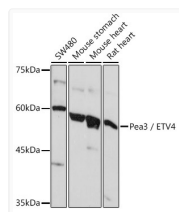
Immunohistochemistry analysis of Pea3/ ETV4 in paraffin-embedded Mouse skin using Pea3/ ETV4 Rabbit polyclonal antibody (STJ28361) at dilution of 1:100 (40x lens). Perform high pressure antigen retrieval with 10 mM citrate buffer pH 6. 0 before commencing with immunohistochemistry staining protocol.



Immunohistochemistry analysis of Pea3/ ETV4 in paraffin-embedded Human skin using Pea3/ ETV4 Rabbit polyclonal antibody (STJ28361) at dilution of 1:100 (40x lens). Perform high pressure antigen retrieval with 10 mM citrate buffer pH 6. 0 before commencing with immunohistochemistry staining protocol.



Western blot analysis of various lysates using Pea3/ ETV4 Rabbit polyclonal antibody (STJ28361) at 1:1000 dilution. Secondary antibody: HRP Goat Anti-Rabbit IgG (H+L) (STJS000856) at 1:10000 dilution. Lysates/proteins: 25 Mu g per lane. Blocking buffer: 3% nonfat dry milk in TBST. Detection: ECL Basic Kit. Exposure time: 10s.



Western blot analysis of various lysates using Pea3/ ETV4 Rabbit polyclonal antibody (STJ28361) at 1:1000 dilution. Secondary antibody: HRP Goat Anti-Rabbit IgG (H+L) (STJS000856) at 1:10000 dilution. Lysates/proteins: 25 Mu g per lane. Blocking buffer: 3% nonfat dry milk in TBST. Detection: ECL Basic Kit. Exposure time: 5s.