

Anti-COL1A2 antibody (501-600) (STJ28351)

GENERAL INFORMATION

Product Type	Primary antibodies
Applications	WB/IHC-P/IF/ICC/ELISA
Host / Source	Rabbit
Reactivity	Human/Mouse/Rat

PRODUCT PROPERTIES

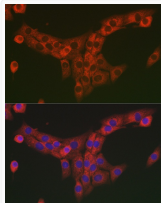
Clonality	Polyclonal
Concentration	Lot specific
Conjugation	Unconjugated
Purification	Affinity purification
Dilution Range	WB:1:500-1:1000 IHC-P:1:50-1:200 IF/ICC:1:25-1:200 ELISA:Recommended starting concentration is 1 µg/mL. Please optimize the concentration based on your specific assay requirements.
Formulation	PBS with 0.02% Sodium Azide, 50% Glycerol, pH 7.3.
Isotype	IgG
Molecular Weight	Protein Mw: 129kDa Observed Mw: 165kDa
Storage Instruction	Store at -20°C for up to 1 year from the date of receipt, and avoid repeat freeze-thaw cycles.

TARGET INFORMATION

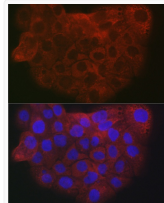
Gene ID	1278
Gene Symbol	COL1A2
UniProt ID	CO1A2_HUMAN
Immunogen Region	501-600
Immunogen Sequence	TGDPGKNGDKGHAGLAGARG APGPDGNNGAQQPPGPGQGVQ GKGEGQPPGPPGFQGLPGP SGPAGEVVGKPGERGLHGFEFG LPGPAGPRGERGPPGESGAA
Specificity	A synthetic peptide corresponding to a sequence within amino acids 501-600 of human Collagen I/COL1A2 (NP_000080.2).

ADDITIONAL INFORMATION

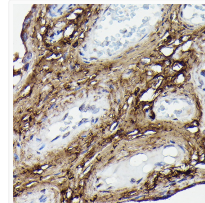
Note **STRICTLY FOR FURTHER SCIENTIFIC RESEARCH USE ONLY (RUO). MUST NOT TO BE USED IN DIAGNOSTIC OR THERAPEUTIC APPLICATIONS.**



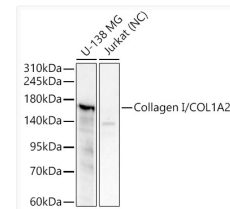
Immunofluorescence analysis of NIH/3T3 cells using Collagen I/COL1A2 Rabbit polyclonal antibody (STJ28351) at dilution of 1:25. Secondary antibody: Cy3 Goat Anti-Rabbit IgG (H+L) at 1:500 dilution. Blue: DAPI for nuclear staining.



Immunofluorescence analysis of A-431 cells using Collagen I/COL1A2 Rabbit polyclonal antibody (STJ28351) at dilution of 1:25. Secondary antibody: Cy3 Goat Anti-Rabbit IgG (H+L) at 1:500 dilution. Blue: DAPI for nuclear staining.



Immunohistochemistry analysis of Collagen I/COL1A2 in paraffin-embedded human placenta using Collagen I/COL1A2 Rabbit polyclonal antibody (STJ28351) at dilution of 1:100 (40x lens). Perform high pressure antigen retrieval with 10 mM citrate buffer pH 6.0 before commencing with immunohistochemistry staining protocol.



Western blot analysis of various lysates, using Collagen I/COL1A2 Rabbit polyclonal antibody (STJ28351) at 1:1000 dilution. Secondary antibody: HRP Goat Anti-Rabbit IgG (H+L) (STJS000856) at 1:10000 dilution. Lysates/proteins: 25µg per lane. Blocking buffer: 3% nonfat dry milk in TBST. Detection: ECL Basic Kit. Negative control (NC): JurkatExposure time: 30s.