

Anti-HEXIM1 antibody (210-359) (STJ28342)

GENERAL INFORMATION

Product Type	Primary antibodies
Applications	WB/IHC-P/ELISA
Host / Source	Rabbit
Reactivity	Human/Mouse/Rat

PRODUCT PROPERTIES

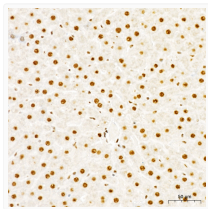
Clonality	Polyclonal
Concentration	Lot specific
Conjugation	Unconjugated
Purification	Affinity purification
Dilution Range	WB:1:500-1:2000 IHC-P:1:50-1:200 ELISA:Recommended starting concentration is 1 µg/mL. Please optimize the concentration based on your specific assay requirements.
Formulation	PBS with 0.02% Sodium Azide, 50% Glycerol, pH 7.3.
Isotype	IgG
Molecular Weight	Protein Mw: 41kDa Observed Mw: 66kDa
Storage Instruction	Store at -20°C for up to 1 year from the date of receipt, and avoid repeat freeze-thaw cycles.

TARGET INFORMATION

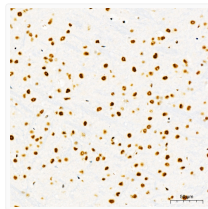
Gene ID	10614
Gene Symbol	HEXIM1
UniProt ID	HEX11_HUMAN
Immunogen Region	210-359
Immunogen Sequence	MDDHDQEEPDLKTGLYSKRA AAKSDDTSDDDFMEEGGGEED GGSDGMGGDGSEFLQRDFSE TYERYHTESLQNMKQELIK EYLELEKCLSRME DENNRLR LESKRLGGDDARVRELELEL DRLRAENLQLLTENELHRQQ ERAPLSKFGD
Specificity	Recombinant fusion protein containing a sequence corresponding to amino acids 210-359 of human HEXIM1 (NP_006451.1).

ADDITIONAL INFORMATION

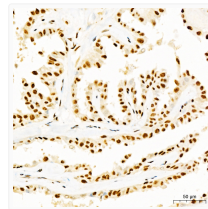
Note **STRICTLY FOR FURTHER SCIENTIFIC RESEARCH USE ONLY (RUO). MUST NOT TO BE USED IN DIAGNOSTIC OR THERAPEUTIC APPLICATIONS.**



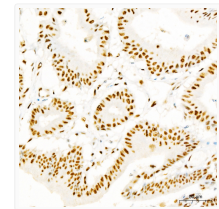
Immunohistochemistry analysis of HEXIM1 in paraffin-embedded Rat liver tissue using HEXIM1 Rabbit polyclonal antibody (STJ28342) at a dilution of 1:100 (40x lens). High pressure antigen retrieval was performed with 0.01 M citrate buffer (pH 6.0) prior to immunohistochemistry staining.



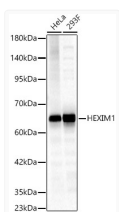
Immunohistochemistry analysis of HEXIM1 in paraffin-embedded Mouse brain tissue using HEXIM1 Rabbit polyclonal antibody (STJ28342) at a dilution of 1:100 (40x lens). High pressure antigen retrieval was performed with 0.01 M citrate buffer (pH 6.0) prior to immunohistochemistry staining.



Immunohistochemistry analysis of HEXIM1 in paraffin-embedded Human thyroid cancer tissue using HEXIM1 Rabbit polyclonal antibody (STJ28342) at a dilution of 1:100 (40x lens). High pressure antigen retrieval was performed with 0.01 M citrate buffer (pH 6.0) prior to immunohistochemistry staining.



Immunohistochemistry analysis of HEXIM1 in paraffin-embedded Human colon carcinoma tissue using HEXIM1 Rabbit polyclonal antibody (STJ28342) at a dilution of 1:100 (40x lens). High pressure antigen retrieval was performed with 0.01 M citrate buffer (pH 6.0) prior to immunohistochemistry staining.



Western blot analysis of various lysates, using HEXIM1 Rabbit polyclonal antibody (STJ28342) at 1:700 dilution. Secondary antibody: HRP Goat Anti-Rabbit IgG (H+L) (STJS000856) at 1:10000 dilution. Lysates/proteins: 25µg per lane. Blocking buffer: 3% nonfat dry milk in TBST. Detection: ECL Basic Kit. Exposure time: 30s.