

Anti-TP53BP1 antibody (895-1031) (STJ28324)

GENERAL INFORMATION

Product Type	Primary antibodies
Applications	WB/IHC-P/ELISA
Host / Source	Rabbit
Reactivity	Human/Mouse/Rat

PRODUCT PROPERTIES

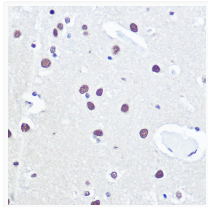
Clonality	Polyclonal
Concentration	Lot specific
Conjugation	Unconjugated
Purification	Affinity purification
Dilution Range	WB:1:500-1:1000 IHC-P:1:50-1:200 ELISA:Recommended starting concentration is 1 µg/mL. Please optimize the concentration based on your specific assay requirements.
Formulation	PBS with 0.05% Proclin300, 50% Glycerol, pH 7.3.
Isotype	IgG
Molecular Weight	Protein Mw: 214kDa Observed Mw: 450kDa
Storage Instruction	Store at -20°C for up to 1 year from the date of receipt, and avoid repeat freeze-thaw cycles.

TARGET INFORMATION

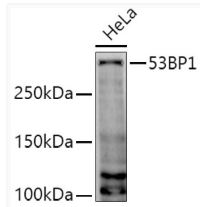
Gene ID	7158
Gene Symbol	TP53BP1
UniProt ID	TP53B_HUMAN
Immunogen Region	895-1031
Immunogen Sequence	FCESSSSETPFHFTLPKEGDI IPPLTGATPPLIGHLKLEPK RHSTPIGISNYPESTIATSD VMESMVEVDHDPILGSGKGD SGAAPDVDDKLCRLMKLVSP ETEASEESLQFNLEKPATGE RKNGSTAVAESVASPQK
Specificity	Recombinant fusion protein containing a sequence corresponding to amino acids 895-1031 of human TP53BP1 (NP_005648.1).

ADDITIONAL INFORMATION

Note **STRICTLY FOR FURTHER SCIENTIFIC RESEARCH USE ONLY (RUO). MUST NOT TO BE USED IN DIAGNOSTIC OR THERAPEUTIC APPLICATIONS.**



Immunohistochemistry analysis of paraffin-embedded human brain using 53BP1 Rabbit polyclonal antibody (STJ28324) at dilution of 1:100 (40x lens). Perform high pressure antigen retrieval with 10 mM citrate buffer pH 6.0 before commencing with immunohistochemistry staining protocol.



Western blot analysis of extracts of HeLa cells, using 53BP1 antibody (STJ28324) at 1:1000 dilution. Secondary antibody: HRP Goat Anti-Rabbit IgG (H+L) (STJS000856) at 1:10000 dilution. Lysates/proteins: 25 µg per lane. Blocking buffer: 3% nonfat dry milk in TBST. Detection: ECL Enhanced Kit. Exposure time: 90s.