

Anti-ST6GAL1 antibody (27-200) (STJ28321)

GENERAL INFORMATION

| | |
|---------------|--------------------|
| Product Type | Primary antibodies |
| Applications | WB/IHC-P/ELISA |
| Host / Source | Rabbit |
| Reactivity | Human/Mouse/Rat |

PRODUCT PROPERTIES

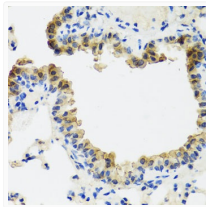
| | |
|---------------------|--|
| Clonality | Polyclonal |
| Concentration | Lot specific |
| Conjugation | Unconjugated |
| Purification | Affinity purification |
| Dilution Range | WB:1:500-1:2000 IHC-P:1:50-1:100 ELISA:Recommended starting concentration is 1 Mu g/mL. Please optimize the concentration based on your specific assay requirements. |
| Formulation | PBS with 0.02% Sodium Azide, 50% Glycerol, pH 7.3. |
| Isotype | IgG |
| Molecular Weight | Protein Mw: 47kDa Observed Mw: 50-70kDa |
| Storage Instruction | Store at -20°C for up to 1 year from the date of receipt, and avoid repeat freeze-thaw cycles. |

TARGET INFORMATION

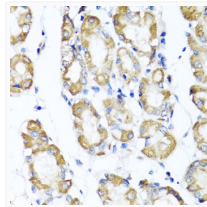
| | |
|--------------------|--|
| Gene ID | 6480 |
| Gene Symbol | ST6GAL1 |
| UniProt ID | SIAT1_HUMAN |
| Immunogen Region | 27-200 |
| Immunogen Sequence | KEKKKGSYYDSFKLQTKFEQ VLKSLGKLAGSDSQSVSSS STQDPHRGRQTLGSLRGLAK AKPEASFQVWNKDSSSKNLI PRLQKIWKNYLSMNKYKVS Y KGPGPGIKFSAEALRCHLRD HVVNSMVEVTDFFPNTSEWE GYLPKESIRTKAGPWGRCAV VSSAGSLKSSQLGR |
| Specificity | Recombinant fusion protein containing a sequence corresponding to amino acids 27-200 of human ST6GAL1 (NP_775323.1). |

ADDITIONAL INFORMATION

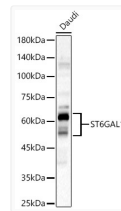
Note **STRICTLY FOR FURTHER SCIENTIFIC RESEARCH USE ONLY (RUO). MUST NOT TO BE USED IN DIAGNOSTIC OR THERAPEUTIC APPLICATIONS.**



Immunohistochemistry analysis of ST6GAL1 in paraffin-embedded mouse lung using ST6GAL1 Rabbit polyclonal antibody (STJ28321) at dilution of 1:100 (40x lens). Perform microwave antigen retrieval with 10 mM PBS buffer pH 7.2 before commencing with immunohistochemistry staining protocol.



Immunohistochemistry analysis of ST6GAL1 in paraffin-embedded human stomach using ST6GAL1 Rabbit polyclonal antibody (STJ28321) at dilution of 1:100 (40x lens). Perform microwave antigen retrieval with 10 mM PBS buffer pH 7.2 before commencing with immunohistochemistry staining protocol.



Western blot analysis of lysates from Daudi cells, using ST6GAL1 Rabbit polyclonal antibody (STJ28321) at 1:2000 dilution. Secondary antibody: HRP Goat Anti-Rabbit IgG (H+L) (STJS000856) at 1:10000 dilution. Lysates/proteins: 25 Mu g per lane. Blocking buffer: 3% nonfat dry milk in TBST. Detection: ECL Basic Kit. Exposure time: 60s.