

## Anti-RUVBL1 antibody (1-240) (STJ28290)

### GENERAL INFORMATION

Product Type	Primary antibodies
Applications	WB/IHC-P/IF/ICC/ELISA
Host / Source	Rabbit
Reactivity	Human/Mouse

### PRODUCT PROPERTIES

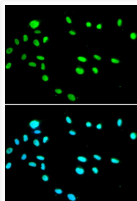
Clonality	Polyclonal
Concentration	Lot specific
Conjugation	Unconjugated
Purification	Affinity purification
Dilution Range	WB:1:500-1:2000 IHC-P:1:50-1:200 IF/ICC:1:20-1:50 ELISA:Recommended starting concentration is 1 Mu g/mL. Please optimize the concentration based on your specific assay requirements.
Formulation	PBS with 0.02% Sodium Azide, 50% Glycerol, pH 7.3.
Isotype	IgG
Molecular Weight	Protein Mw: 50kDa Observed Mw: 55kDa
Storage Instruction	Store at -20°C for up to 1 year from the date of receipt, and avoid repeat freeze-thaw cycles.

### TARGET INFORMATION

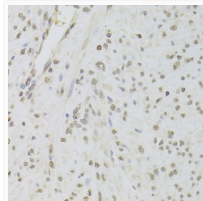
Gene ID	<a href="#">8607</a>
Gene Symbol	<a href="#">RUVBL1</a>
UniProt ID	<a href="#">RUVB1_HUMAN</a>
Immunogen Region	1-240
Immunogen Sequence	MKIEEVKSTTKQRIASHSH VKGLGLDESGLAKQAASGLV GQENAREACGVIVELIKSKK MAGRAVLLAGPPGTGKTALA LAIAQELGSKVPFCPMVGSE VYSTEIKKTEVLMENFRRAI GLRIKETKEVYEVEVTELP CETENPMGGYGKTISHVIIG LKTAKGTKQLKLDPSIFESL QKERVEAGDVIYIEANSGAV KRQGRCDTYATEFDLEAEEY VLPKGDVHKKKEIQDVT
Specificity	Recombinant fusion protein containing a sequence corresponding to amino acids 1-240 of human RUVBL1/TIP49A/PONTIN (NP_003698.1).

### ADDITIONAL INFORMATION

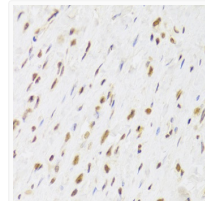
Note STRICTLY FOR FURTHER SCIENTIFIC RESEARCH USE ONLY (RUO). MUST NOT TO BE USED IN DIAGNOSTIC OR THERAPEUTIC APPLICATIONS.



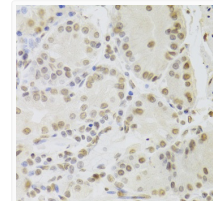
Immunofluorescence analysis of A549 cells using RUVBL1/TIP49A/PONTIN antibody (STJ28290). Blue: DAPI for nuclear staining.



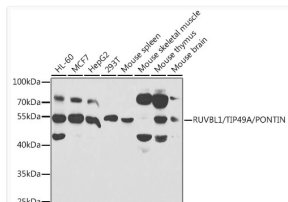
Immunohistochemistry analysis of paraffin-embedded human leiomyoma of uterus using RUVBL1/TIP49A/PONTIN Antibody (STJ28290) at dilution of 1:100 (40x lens). Perform microwave antigen retrieval with 10 mM PBS buffer pH 7. 2 before commencing with immunohistochemistry staining protocol.



Immunohistochemistry analysis of paraffin-embedded human gastric cancer using RUVBL1/TIP49A/PONTIN Antibody (STJ28290) at dilution of 1:100 (40x lens). Perform microwave antigen retrieval with 10 mM PBS buffer pH 7. 2 before commencing with immunohistochemistry staining protocol.



Immunohistochemistry analysis of paraffin-embedded human stomach using RUVBL1/TIP49A/PONTIN Antibody (STJ28290) at dilution of 1:100 (40x lens). Perform microwave antigen retrieval with 10 mM PBS buffer pH 7. 2 before commencing with immunohistochemistry staining protocol.



Western blot analysis of extracts of various cell lines, using RUVBL1/TIP49A/PONTIN antibody (STJ28290) at 1:1000 dilution. Secondary antibody: HRP Goat Anti-Rabbit IgG (H+L) (STJS000856) at 1:10000 dilution. Lysates/proteins: 25 Mu g per lane. Blocking buffer: 3% nonfat dry milk in TBST. Detection: ECL Enhanced Kit. Exposure time: 15s.