

Anti-FUT2 antibody (29-150) (STJ28288)

GENERAL INFORMATION

Product Type	Primary antibodies
Applications	WB/ELISA
Host / Source	Rabbit
Reactivity	Human

PRODUCT PROPERTIES

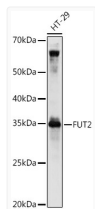
Clonality	Polyclonal
Concentration	Lot specific
Conjugation	Unconjugated
Purification	Affinity purification
Dilution Range	WB:1:500-1:1000 ELISA:Recommended starting concentration is 1 Mu g/mL. Please optimize the concentration based on your specific assay requirements.
Formulation	PBS with 0.02% Sodium Azide, 50% Glycerol, pH 7.3.
Isotype	IgG
Molecular Weight	Protein Mw: 39kDa Observed Mw: 35kDa
Storage Instruction	Store at -20°C for up to 1 year from the date of receipt, and avoid repeat freeze-thaw cycles.

TARGET INFORMATION

Gene ID	2524
Gene Symbol	FUT2
UniProt ID	FUT2_HUMAN
Immunogen Region	29-150
Immunogen Sequence	QQRLAKIQAMWELPVQIPVL ASTSKALGPSQLRGMWTINA IGRLGNQMGEYATLYALAKM NGRPAFIPAQMHSSTLAPIFR ITLPVLHSATASRIPWQNYH LNDWMEEEYRHIPGEYVRFY GY
Specificity	Recombinant fusion protein containing a sequence corresponding to amino acids 29-150 of human FUT2 (NP_001091107.1).

ADDITIONAL INFORMATION

Note STRICTLY FOR FURTHER SCIENTIFIC RESEARCH USE ONLY (RUO). MUST NOT TO BE USED IN DIAGNOSTIC OR THERAPEUTIC APPLICATIONS.



Western blot analysis of lysates from HT-29 cells, using FUT2 Rabbit polyclonal antibody (STJ28288) at 1:1000 dilution. Secondary antibody: HRP Goat Anti-Rabbit IgG (H+L) (STJS000856) at 1:10000 dilution. Lysates/proteins: 25 Mu g per lane. Blocking buffer: 3% nonfat dry milk in TBST. Detection: ECL Basic Kit. Exposure time: 30s.