

Anti-GC antibody (324-493) (STJ28278)

GENERAL INFORMATION

Product Type	Primary antibodies
Applications	WB/ELISA
Host / Source	Rabbit
Reactivity	Human/Mouse

PRODUCT PROPERTIES

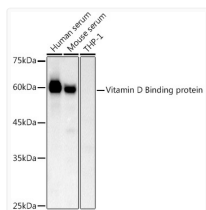
Clonality	Polyclonal
Concentration	Lot specific
Conjugation	Unconjugated
Purification	Affinity purification
Dilution Range	WB:1:500-1:1000 ELISA:Recommended starting concentration is 1 Mu g/mL. Please optimize the concentration based on your specific assay requirements.
Formulation	PBS with 0.05% Proclin300, 50% Glycerol, pH 7.3.
Isotype	IgG
Molecular Weight	Protein Mw: 53kDa Observed Mw: 60kDa
Storage Instruction	Store at -20°C for up to 1 year from the date of receipt, and avoid repeat freeze-thaw cycles.

TARGET INFORMATION

Gene ID	2638
Gene Symbol	GC
UniProt ID	VTDB_HUMAN
Immunogen Region	324-493
Immunogen Sequence	AMDVFVCTYFMPAAQLPELP DVELPTNKDVCDPGNTKVMD KYTFELSRRTHLPEVFLSKV LEPTLKS LGECDDVEDSTTC FNAKGPLLKKELSSFIDKGQ ELCADYSENTFTEYKKKLAE RLKAKLPDATPTELAKLVNK HSDFASNCCSINSPPLYCDS EIDAELKNIL
Specificity	Recombinant fusion protein containing a sequence corresponding to amino acids 324-493 of human Vitamin D Binding protein (NP_001191236.1).

ADDITIONAL INFORMATION

Note STRICTLY FOR FURTHER SCIENTIFIC RESEARCH USE ONLY (RUO). MUST NOT TO BE USED IN DIAGNOSTIC OR THERAPEUTIC APPLICATIONS.



Western blot analysis of extracts of various cell lines, using Vitamin D Binding protein antibody (STJ28278) at 1:1000 dilution. Secondary antibody: HRP Goat Anti-Rabbit IgG (H+L) (STJS000856) at 1:10000 dilution. Lysates/proteins: 25 Mu g per lane. Blocking buffer: 3% nonfat dry milk in TBST. Detection: ECL Basic Kit. Exposure time: 10s.