

Anti-CCAR1 antibody (1-200) (STJ28256)

GENERAL INFORMATION

Product Type	Primary antibodies
Applications	WB/IP/ELISA
Host / Source	Rabbit
Reactivity	Human/Mouse/Rat

PRODUCT PROPERTIES

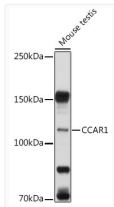
Clonality	Polyclonal
Concentration	Lot specific
Conjugation	Unconjugated
Purification	Affinity purification
Dilution Range	WB:1:500-1:1000 IP:0.5 Mu g-4 Mu g antibody for 200 Mu g-400 Mu g extracts of whole cells ELISA:Recommended starting concentration is 1 Mu g/mL. Please optimize the concentration based on your specific assay requirements.
Formulation	PBS with 0.02% Sodium Azide, 50% Glycerol, pH 7.3.
Isotype	IgG
Molecular Weight	Protein Mw: 133kDa Observed Mw: 132kDa
Storage Instruction	Store at -20°C for up to 1 year from the date of receipt, and avoid repeat freeze-thaw cycles.

TARGET INFORMATION

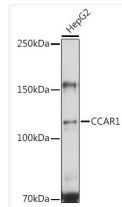
Gene ID	55749
Gene Symbol	CCAR1
UniProt ID	CCAR1_HUMAN
Immunogen Region	1-200
Immunogen Sequence	MAQFGGQKNPPWATQFTATA VSQPAALGVQQPSLLGASPT IYQQTALAAAGLTTQTTPAN YQLTQTAAALQQQAAAAAAL QQQYSQPQQALYSVQQQLQQ PQQTLLTQPVALPTSLSL TPQPTAQITVSYPTRSSQQ QTQPQKQRVFTGVVTKLHDT FGFVDEDVFFQLSAVKGKTP QVGDRLVLEATYNPNMPFKW
Specificity	Recombinant fusion protein containing a sequence corresponding to amino acids 1-200 of human CCAR1 (NP_060707.2).

ADDITIONAL INFORMATION

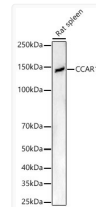
Note STRICTLY FOR FURTHER SCIENTIFIC RESEARCH USE ONLY (RUO). MUST NOT TO BE USED IN DIAGNOSTIC OR THERAPEUTIC APPLICATIONS.



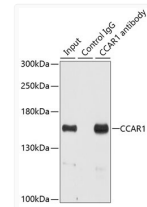
Western blot analysis of extracts of mouse testis, using CCAR1 antibody (STJ28256) at 1:1000 dilution. Secondary antibody: HRP Goat Anti-rabbit IgG (H+L) (STJS000856) at 1:10000 dilution. Lysates/proteins: 25 Mu g per lane. Blocking buffer: 3% non-fat dry milk in TBST. Detection: ECL Enhanced Kit. Exposure time: 5s.



Western blot analysis of extracts of HepG2 cells, using CCAR1 antibody (STJ28256) at 1:1000 dilution. Secondary antibody: HRP Goat Anti-rabbit IgG (H+L) (STJS000856) at 1:10000 dilution. Lysates/proteins: 25 Mu g per lane. Blocking buffer: 3% non-fat dry milk in TBST. Detection: ECL Basic Kit. Exposure time: 10s.



Western blot analysis of extracts of Rat spleen, using CCAR1 antibody (STJ28256) at 1:700 dilution. Secondary antibody: HRP Goat Anti-rabbit IgG (H+L) (STJS000856) at 1:10000 dilution. Lysates/proteins: 25 Mu g per lane. Blocking buffer: 3% non-fat dry milk in TBST. Detection: ECL Enhanced Kit. Exposure time: 30s.



Immunoprecipitation analysis of 200 Mu g extracts of HeLa cells using 3 Mu g CCAR1 antibody (STJ28256). Western blot was performed from the immunoprecipitate using CCAR1 antibody (STJ28256) at a dilution of 1:500.