

Anti-ZWINT antibody (1-277) (STJ28250)

GENERAL INFORMATION

Product Type	Primary antibodies
Applications	WB/IF/ICC/ELISA
Host / Source	Rabbit
Reactivity	Human/Mouse/Rat

PRODUCT PROPERTIES

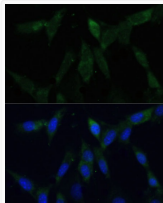
Clonality	Polyclonal
Concentration	Lot specific
Conjugation	Unconjugated
Purification	Affinity purification
Dilution Range	WB:1:500-1:2000 IF/CC:1:50-1:200 ELISA:Recommended starting concentration is 1 µg/mL. Please optimize the concentration based on your specific assay requirements.
Formulation	PBS with 0.02% Sodium Azide, 50% Glycerol, pH 7.3.
Isotype	IgG
Molecular Weight	Protein Mw: 31kDa Observed Mw: 39kDa
Storage Instruction	Store at -20°C for up to 1 year from the date of receipt, and avoid repeat freeze-thaw cycles.

TARGET INFORMATION

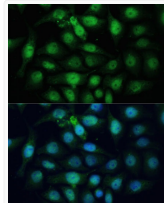
Gene ID	11130
Gene Symbol	ZWINT
UniProt ID	ZWINT_HUMAN
Immunogen Region	1-277
Immunogen Sequence	MEAAETEAEAAALEVLAEVA GILEPVGLEEEAELPAKILV EFVVDSSQKKDKLLCSQLQVA DFLQNILAQEDTAKGLDPLA SEDTSRQKAIAAKEQWKELK ATYREHVEAIKIGLTKALTQ MEEAQRKRTQLREAFEQLQA KQMAMEKRRRAVQNWQLQQ EKHLQHLAEVSAEVRERKTG TQQELDRVFQKLGNLKQQAE QERDKLQRYQTFLQLLYTLQ GKLLFPPEAAEAENLPDDK
Specificity	Recombinant fusion protein containing a sequence corresponding to amino acids 1-277 of human ZWINT (NP_008988.2).

ADDITIONAL INFORMATION

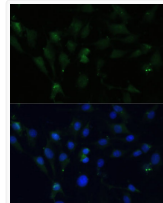
Note STRICTLY FOR FURTHER SCIENTIFIC RESEARCH USE ONLY (RUO). MUST NOT TO BE USED IN DIAGNOSTIC OR THERAPEUTIC APPLICATIONS.



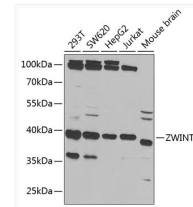
Immunofluorescence analysis of NIH-3T3 cells using ZWINT Polyclonal Antibody (STJ28250) at dilution of 1:100 (40x lens). Blue: DAPI for nuclear staining.



Immunofluorescence analysis of HeLa cells using ZWINT Polyclonal Antibody (STJ28250) at dilution of 1:100 (40x lens). Blue: DAPI for nuclear staining.



Immunofluorescence analysis of C6 cells using ZWINT Polyclonal Antibody (STJ28250) at dilution of 1:100 (40x lens). Blue: DAPI for nuclear staining.



Western blot analysis of extracts of various cell lines, using ZWINT antibody (STJ28250) at 1:1000 dilution. Secondary antibody: HRP Goat Anti-Rabbit IgG (H+L) (STJS000856) at 1:10000 dilution. Lysates/proteins: 25 µg per lane. Blocking buffer: 3% nonfat dry milk in TBST.