

Anti-YEATS4 antibody (1-227) (STJ28240)

GENERAL INFORMATION

Product Type	Primary antibodies
Applications	WB/IHC-P/IF/ICC/ELISA
Host / Source	Rabbit
Reactivity	Human/Mouse/Rat

PRODUCT PROPERTIES

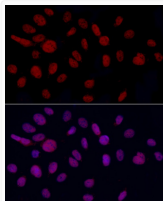
Clonality	Polyclonal
Concentration	Lot specific
Conjugation	Unconjugated
Purification	Affinity purification
Dilution Range	WB:1:500-1:1000 IHC-P:1:50-1:200 IF/CC:1:50-1:200 ELISA:Recommended starting concentration is 1 μ g/mL. Please optimize the concentration based on your specific assay requirements.
Formulation	PBS with 0.02% Sodium Azide, 50% Glycerol, pH 7.3.
Isotype	IgG
Molecular Weight	Protein Mw: 26kDa Observed Mw: 27kDa
Storage Instruction	Store at -20°C for up to 1 year from the date of receipt, and avoid repeat freeze-thaw cycles.

TARGET INFORMATION

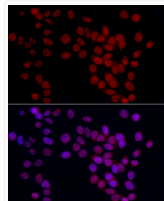
Gene ID	8089
Gene Symbol	YEATS4
UniProt ID	YEYS4_HUMAN
Immunogen Region	1-227
Immunogen Sequence	MFKRMAEFGPDSGGRVKGVT IVKPIVYGNVARYFGKKREE DGHTHQWTVYVKPYRNEDMS AYVKIQFKLHESYGNPLRV VTKPPYEITETGWGEFEIII KIFFIDPNERPVTLYHLLKL FQSDTNAMLGKKTIVSEFYD EMIFQDPTAMMQLLTTSRQ LTLGAYKHETEFALVVKTR EKLEAAKKKTSFEIAELKER LKASRETINCLKNEIRKLEE DDQAKDI
Specificity	Recombinant fusion protein containing a sequence corresponding to amino acids 1-227 of human YEATS4 (NP_006521.1).

ADDITIONAL INFORMATION

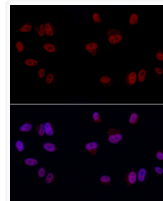
Note	STRICTLY FOR FURTHER SCIENTIFIC RESEARCH USE ONLY (RUO). MUST NOT TO BE USED IN DIAGNOSTIC OR THERAPEUTIC APPLICATIONS.
------	---



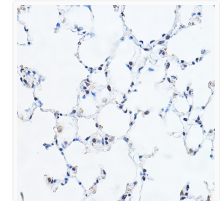
Immunofluorescence analysis of U2OS cells using YEATS4 Rabbit polyclonal antibody (STJ28240) at dilution of 1:50 (40x lens). Blue: DAPI for nuclear staining.



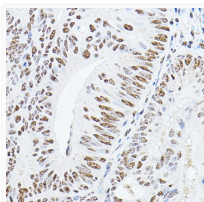
Immunofluorescence analysis of HeLa cells using YEATS4 Rabbit polyclonal antibody (STJ28240) at dilution of 1:50 (40x lens). Blue: DAPI for nuclear staining.



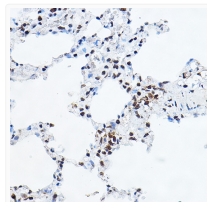
Immunofluorescence analysis of A-549 cells using YEATS4 Rabbit polyclonal antibody (STJ28240) at dilution of 1:50 (40x lens). Blue: DAPI for nuclear staining.



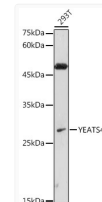
Immunohistochemistry analysis of paraffin-embedded mouse lung using YEATS4 Rabbit polyclonal antibody (STJ28240) at dilution of 1:100 (40x lens). Perform high pressure antigen retrieval with 10 mM citrate buffer pH 6.0 before commencing with immunohistochemistry staining protocol.



Immunohistochemistry analysis of paraffin-embedded human colon carcinoma using YEATS4 Rabbit polyclonal antibody (STJ28240) at dilution of 1:100 (40x lens). Perform high pressure antigen retrieval with 10 mM citrate buffer pH 6.0 before commencing with immunohistochemistry staining protocol.



Immunohistochemistry analysis of paraffin-embedded rat lung using YEATS4 Rabbit polyclonal antibody (STJ28240) at dilution of 1:100 (40x lens). Perform high pressure antigen retrieval with 10 mM citrate buffer pH 6.0 before commencing with immunohistochemistry staining protocol.



Western blot analysis of extracts of 293T cells, using YEATS4 antibody (STJ28240) at 1:1000 dilution. Secondary antibody: HRP Goat Anti-Rabbit IgG (H+L) (STJS000856) at 1:10000 dilution. Lysates/proteins: 25 μ g per lane. Blocking buffer: 3% nonfat dry milk in TBST. Detection: ECL Enhanced Kit. Exposure time: 180s.