

Anti-TAC3 antibody (1-121) (STJ28234)

GENERAL INFORMATION

Product Type	Primary antibodies
Applications	WB/IF/ICC/ELISA
Host / Source	Rabbit
Reactivity	Human/Mouse/Rat

PRODUCT PROPERTIES

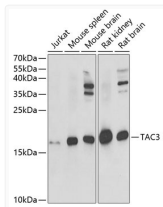
Clonality	Polyclonal
Concentration	Lot specific
Conjugation	Unconjugated
Purification	Affinity purification
Dilution Range	WB:1:500-1:2000 IF/CC:1:50-1:200 ELISA:Recommended starting concentration is 1 μ g/mL. Please optimize the concentration based on your specific assay requirements.
Formulation	PBS with 0.02% Sodium Azide, 50% Glycerol, pH 7.3.
Isotype	IgG
Molecular Weight	Protein Mw: 13kDa Observed Mw: 16kDa
Storage Instruction	Store at -20°C for up to 1 year from the date of receipt, and avoid repeat freeze-thaw cycles.

TARGET INFORMATION

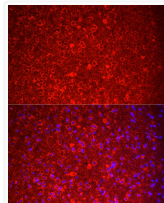
Gene ID	6866
Gene Symbol	TAC3
UniProt ID	TKNK_HUMAN
Immunogen Region	1-121
Immunogen Sequence	MRIMLLFTAILAFSLAQSFG AVCKEPQEEVVPGGGRSKRD PDLYQLLQRLFKSHSSLEGL LKALSQASTDPKESTSPEKR DMHDFVGLMGKRSVQPDSP TDVNQENVPSFGILKYPRA E
Specificity	Recombinant fusion protein containing a sequence corresponding to amino acids 1-121 of human TAC3 (NP_037383.1).

ADDITIONAL INFORMATION

Note **STRICTLY FOR FURTHER SCIENTIFIC RESEARCH USE ONLY (RUO). MUST NOT TO BE USED IN DIAGNOSTIC OR THERAPEUTIC APPLICATIONS.**



Western blot analysis of extracts of various cell lines, using TAC3 antibody (STJ28234) at 1:1000 dilution. _Secondary antibody: HRP Goat Anti-rabbit IgG (H+L) (STJS000856) at 1:10000 dilution. _Lysates/proteins: 25 μ g per lane. _Blocking buffer: 3% non-fat dry milk in TBST. _Detection: ECL Enhanced Kit. _Exposure time: 20s.



Immunofluorescence analysis of mouse brain cells using TAC3 rabbit polyclonal antibody (STJ28234) at dilution of 1:100 (40x lens). Blue: DAPI for nuclear staining.