

Anti-NEU1 antibody (210-415) (STJ28221)

GENERAL INFORMATION

Product Type	Primary antibodies
Applications	WB/IHC-P/ELISA
Host / Source	Rabbit
Reactivity	Human/Mouse/Rat

PRODUCT PROPERTIES

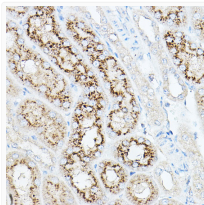
Clonality	Polyclonal
Concentration	Lot specific
Conjugation	Unconjugated
Purification	Affinity purification
Dilution Range	WB:1:500-1:1000 IHC-P:1:50-1:200 ELISA:Recommended starting concentration is 1 Mu g/mL. Please optimize the concentration based on your specific assay requirements.
Formulation	PBS with 0.02% Sodium Azide, 50% Glycerol, pH 7.3.
Isotype	IgG
Molecular Weight	Protein Mw: 45kDa Observed Mw: 45kDa
Storage Instruction	Store at -20°C for up to 1 year from the date of receipt, and avoid repeat freeze-thaw cycles.

TARGET INFORMATION

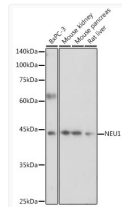
Gene ID	4758
Gene Symbol	NEU1
UniProt ID	NEUR1_HUMAN
Immunogen Region	210-415
Immunogen Sequence	PRKGRLIVCGHGTLELDGVF CLLSDDHGASWRVYSGVSGI PYGQPKQENDFNDECQPYE LPDGSVINARNQNNYHCHC RIVLRSYDACDTRLRPRDVT F DPELVDPVVAAGAVVTSSGI VFFSNPAHPEFRVNLTLRWS FSNGTSWRKETVQLWPGPSG YSSLATLEGSMDGEEQAPQL YVLYEKGRNHYTESISVAKI SVYGT L
Specificity	Recombinant fusion protein containing a sequence corresponding to amino acids 210-415 of human NEU1 (NP_000425.1).

ADDITIONAL INFORMATION

Note **STRICTLY FOR FURTHER SCIENTIFIC RESEARCH USE ONLY (RUO). MUST NOT TO BE USED IN DIAGNOSTIC OR THERAPEUTIC APPLICATIONS.**



Immunohistochemistry analysis of paraffin-embedded mouse kidney using NEU1 Rabbit polyclonal antibody (STJ28221) at dilution of 1:100 (40x lens). Perform high pressure antigen retrieval with 10 mM citrate buffer pH 6.0 before commencing with immunohistochemistry staining protocol.



Western blot analysis of extracts of various cell lines, using NEU1 antibody (STJ28221) at 1:1000 dilution. Secondary antibody: HRP Goat Anti-Rabbit IgG (H+L) (STJS000856) at 1:10000 dilution. Lysates/proteins: 25 Mu g per lane. Blocking buffer: 3% nonfat dry milk in TBST. Detection: ECL Basic Kit. Exposure time: 30s.