

Anti-ASGR2 antibody (58-287) (STJ28203)

GENERAL INFORMATION

Product Type	Primary antibodies
Applications	WB/IF/ICC/ELISA
Host / Source	Rabbit
Reactivity	Human/Mouse

PRODUCT PROPERTIES

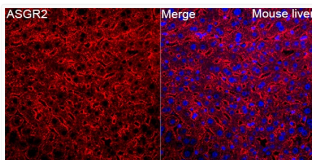
Clonality	Polyclonal
Concentration	Lot specific
Conjugation	Unconjugated
Purification	Affinity purification
Dilution Range	WB:1:500-1:1000 IF/CC:1:50-1:200 ELISA:Recommended starting concentration is 1 Mu g/mL. Please optimize the concentration based on your specific assay requirements.
Formulation	PBS with 0.09% Sodium Azide, 50% Glycerol, pH7.3.
Isotype	IgG
Molecular Weight	Protein Mw: 35kDa Observed Mw: 41kDa
Storage Instruction	Store at -20°C for up to 1 year from the date of receipt, and avoid repeat freeze-thaw cycles.

TARGET INFORMATION

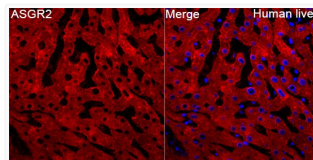
Gene ID	433
Gene Symbol	ASGR2
UniProt ID	ASGR2_HUMAN
Immunogen Region	58-287
Immunogen Sequence	CFSLLLSFNILLVVICVT GSQSEGHGGAQLQAE LRSLK EAFSNFSSSTLVEVQAISTH GGVSGDKITSLGAKLEKQQQ DLKADHDALLFHLKHFPVDL R FVACQMELLHSNGSQRTCC PVNWVEHQGSCYWFSHSGKA WAAEAEKYCQLENAHLVVINS WEEQKFIVQHTNPFNTWIGL TSDSGSWKWVDGTDYRHNYK NWA V T Q P D N W H G H E L G G S E D C V E V Q P D G R W N D D F C L Q V Y
Specificity	Recombinant fusion protein containing a sequence corresponding to amino acids 58-287 of human ASGR2 (NP_550435.1).

ADDITIONAL INFORMATION

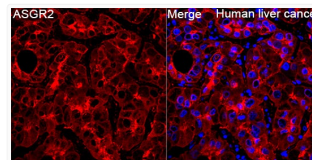
Note STRICTLY FOR FURTHER SCIENTIFIC RESEARCH USE ONLY (RUO). MUST NOT TO BE USED IN DIAGNOSTIC OR THERAPEUTIC APPLICATIONS.



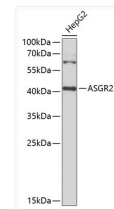
Immunofluorescence analysis of paraffin-embedded Mouse liver tissue using ASGR2 Rabbit polyclonal antibody (STJ28203) at a dilution of 1:100 (40x lens). Secondary antibody: Cy3 Goat Anti-Rabbit IgG (H+L) at 1:500 dilution. Blue: DAPI for nuclear staining. Perform high pressure antigen retrieval with 0.01 M citrate buffer (pH 6.0) prior to IF staining.



Immunofluorescence analysis of paraffin-embedded Human liver tissue using ASGR2 Rabbit polyclonal antibody (STJ28203) at a dilution of 1:100 (40x lens). Secondary antibody: Cy3 Goat Anti-Rabbit IgG (H+L) at 1:500 dilution. Blue: DAPI for nuclear staining. Perform high pressure antigen retrieval with 0.01 M citrate buffer (pH 6.0) prior to IF staining.



Immunofluorescence analysis of paraffin-embedded Human liver cancer tissue using ASGR2 Rabbit polyclonal antibody (STJ28203) at a dilution of 1:100 (40x lens). Secondary antibody: Cy3 Goat Anti-Rabbit IgG (H+L) at 1:500 dilution. Blue: DAPI for nuclear staining. Perform high pressure antigen retrieval with 0.01 M citrate buffer (pH 6.0) prior to IF staining.



Western blot analysis of lysates from HepG2 cells, using ASGR2 Rabbit polyclonal antibody (STJ28203) at 1:1000 dilution. Secondary antibody: HRP Goat Anti-Rabbit IgG (H+L) (STJS000856) at 1:10000 dilution. Lysates/proteins: 25 Mu g per lane. Blocking buffer: 3% nonfat dry milk in TBST. Detection: ECL Basic Kit. Exposure time: 90s.