

## Anti-ADSL antibody (1-310) (STJ28200)

### GENERAL INFORMATION

Product Type	Primary antibodies
Applications	WB/IF/ICC/ELISA
Host / Source	Rabbit
Reactivity	Human/Mouse/Rat

### PRODUCT PROPERTIES

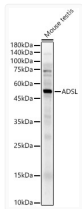
Clonality	Polyclonal
Concentration	Lot specific
Conjugation	Unconjugated
Purification	Affinity purification
Dilution Range	WB:1:500-1:1000 IF/CC:1:20-1:100 ELISA:Recommended starting concentration is 1 Mu g/mL. Please optimize the concentration based on your specific assay requirements.
Formulation	PBS with 0.02% Sodium Azide, 50% Glycerol, pH 7.3.
Isotype	IgG
Molecular Weight	Protein Mw: 55kDa Observed Mw: 55kDa
Storage Instruction	Store at -20°C for up to 1 year from the date of receipt, and avoid repeat freeze-thaw cycles.

### TARGET INFORMATION

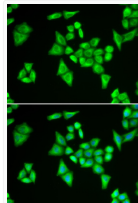
Gene ID	<a href="#">158</a>
Gene Symbol	<a href="#">ADSL</a>
UniProt ID	<a href="#">PUR8_HUMAN</a>
Immunogen Region	1-310
Immunogen Sequence	MAAGGDHGPSYRSPLASR YASPEMCFVFSDDRYKFRWTR QLWLWLAEEAETLGLPITDE QIQEMKSNLENIDFKMAAEE EKRLRHDVMAHVHTFGHCCP KAAGIIHLGATSCYVGDNTD LILRNALDLLLLPKLARVIS RLADFAKERASLPTLGFTHF QPAQLTTVVKRCCLWIQDLC MDLQNLKRVRRDDLRFKRVKGG TTGTQASFLQLFEGDDHKVE QLDKMMVTEKAGFKRAFIIT
Specificity	Recombinant fusion protein containing a sequence corresponding to amino acids 1-310 of human ADSL (NP_000017.1).

### ADDITIONAL INFORMATION

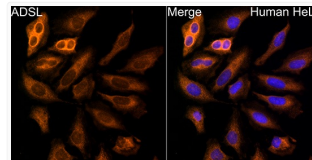
Note STRICTLY FOR FURTHER SCIENTIFIC RESEARCH USE ONLY (RUO). MUST NOT TO BE USED IN DIAGNOSTIC OR THERAPEUTIC APPLICATIONS.



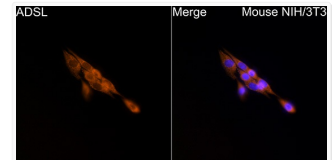
Western blot analysis of mouse testis, using ADSL rabbit polyclonal antibody (STJ28200) at 1:700 dilution. Secondary antibody: HRP Goat Anti-rabbit IgG (H+L) (STJS000856) at 1:10000 dilution. Lysates/proteins: 25 Mu g per lane. Blocking buffer: 3% non-fat dry milk in TBST. Detection: ECL Enhanced Kit. Exposure time: 30s.



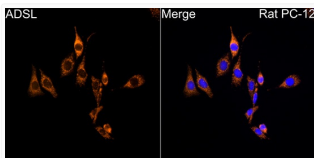
Immunofluorescence analysis of HeLa cells using ADSL antibody (STJ28200). Blue: DAPI for nuclear staining.



Immunofluorescence analysis of HeLa cells using ADSL rabbit polyclonal antibody (STJ28200) at dilution of 1:50 (40x lens). Blue: DAPI for nuclear staining.



Immunofluorescence analysis of NIH/3T3 cells using ADSL rabbit polyclonal antibody (STJ28200) at dilution of 1:50 (40x lens). Blue: DAPI for nuclear staining.



Immunofluorescence analysis of PC-12 cells using ADSL rabbit polyclonal antibody (STJ28200) at dilution of 1:50 (40x lens). Blue: DAPI for nuclear staining.