

Anti-LHCGR antibody (200-360) (STJ28188)

GENERAL INFORMATION

Product Type	Primary antibodies
Applications	WB/IF/ICC/ELISA
Host / Source	Rabbit
Reactivity	Human/Mouse/Rat

PRODUCT PROPERTIES

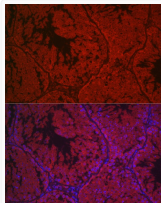
Clonality	Polyclonal
Concentration	Lot specific
Conjugation	Unconjugated
Purification	Affinity purification
Dilution Range	WB:1:100-1:500 IF/CC:1:100-1:500 ELISA:Recommended starting concentration is 1 Mu g/mL. Please optimize the concentration based on your specific assay requirements.
Formulation	PBS with 0.05% Proclin300, 50% Glycerol, pH 7.3.
Isotype	IgG
Molecular Weight	Protein Mw: 79kDa Observed Mw: 85kDa
Storage Instruction	Store at -20°C for up to 1 year from the date of receipt, and avoid repeat freeze-thaw cycles.

TARGET INFORMATION

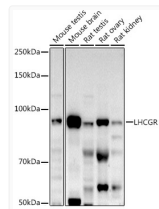
Gene ID	3973
Gene Symbol	LHCGR
UniProt ID	LSHR_HUMAN
Immunogen Region	200-360
Immunogen Sequence	TSLELKENVHLEKMHNGAFR GATGPKTLDISSTKLQALPS YGLESIQRLIATSSYSCLKK PSRETFVNLEATLTYP SHC CAFRNLPKTEQNFSHSISEN FSKQCESTVRKVNNTLYSS MLAESELGWDYEGFCLPK TPRCAPEPDAFNPCEDIMGY D
Specificity	Recombinant fusion protein containing a sequence corresponding to amino acids 200-360 of human LHCGR (NP_000224.2).

ADDITIONAL INFORMATION

Note **STRICTLY FOR FURTHER SCIENTIFIC RESEARCH USE ONLY (RUO). MUST NOT TO BE USED IN DIAGNOSTIC OR THERAPEUTIC APPLICATIONS.**



Immunofluorescence analysis of mouse testis cells using LHCGR Rabbit polyclonal antibody (STJ28188) at dilution of 1:500 (40x lens). Blue: DAPI for nuclear staining.



Western blot analysis of extracts of various cell lines, using LHCGR antibody (STJ28188) at 1:500 dilution. Secondary antibody: HRP Goat Anti-Rabbit IgG (H+L) (STJS000856) at 1:10000 dilution. Lysates/proteins: 25 Mu g per lane. Blocking buffer: 3% nonfat dry milk in TBST. Detection: ECL Enhanced Kit. Exposure time: 90s.