

Anti-RPS3A antibody (1-264) (STJ28158)

GENERAL INFORMATION

Product Type	Primary antibodies
Applications	WB/IHC-P/IF/ICC/IP/ELISA
Host / Source	Rabbit
Reactivity	Human/Mouse/Rat

PRODUCT PROPERTIES

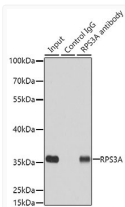
Clonality	Polyclonal
Concentration	Lot specific
Conjugation	Unconjugated
Purification	Affinity purification
Dilution Range	WB:1:500-1:2000 IHC-P:1:50-1:200 IF/ICC:1:50-1:200 IP:0.5 Mu g-4 Mu g antibody for 200 Mu g-400 Mu g extracts of whole cells ELISA:Recommended starting concentration is 1 Mu g/mL. Please optimize the concentration based on your specif
Formulation	PBS with 0.02% Sodium Azide, 50% Glycerol, pH 7.3.
Isotype	IgG
Molecular Weight	Protein Mw: 30kDa Observed Mw: 35kDa
Storage Instruction	Store at -20°C for up to 1 year from the date of receipt, and avoid repeat freeze-thaw cycles.

TARGET INFORMATION

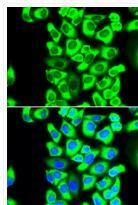
Gene ID	6189
Gene Symbol	RPS3A
UniProt ID	RS3A_HUMAN
Immunogen Region	1-264
Immunogen Sequence	MAVGKNKRLTKGGKKGAKKK VVDPFSKDWYDVKAPAMFN IRNIGKTLVTRTQGTKIASD GLKGRVFEVSLADLQNDDEVA FRKFKLITEDVQGGKNCLTNF HGMDLTRDKMCSMVKKWQTM IEAHVDVKTDDGYLLRLFCV GFTKKRNNQIRKTSYAQHQQ VRQIRKMMMEIMTREVQTND LKEVVNKLIPDSIGKDIEKA CQSIYPLHDVDFVRKVKMLKK PKFELGKLMELHGEGSSSG
Specificity	Recombinant fusion protein containing a sequence corresponding to amino acids 1-264 of human RPS3A (NP_000997.1).

ADDITIONAL INFORMATION

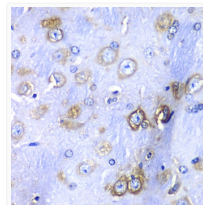
Note STRICTLY FOR FURTHER SCIENTIFIC RESEARCH USE ONLY (RUO). MUST NOT TO BE USED IN DIAGNOSTIC OR THERAPEUTIC APPLICATIONS.



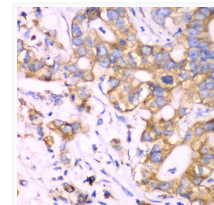
Immunoprecipitation analysis of 200 Mu g extracts of MCF7 cells using 3 Mu g RPS3A antibody (STJ28158). Western blot was performed from the immunoprecipitate using RPS3A antibody (STJ28158) at a dilution of 1:500.



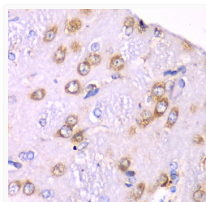
Immunofluorescence analysis of MCF-7 cells using RPS3A Rabbit polyclonal antibody (STJ28158). Secondary antibody: Cy3 Goat Anti-Rabbit IgG (H+L) at 1:500 dilution. Blue: DAPI for nuclear staining.



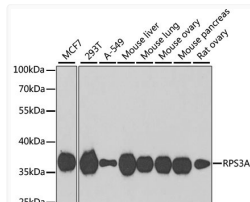
Immunohistochemistry analysis of RPS3A in paraffin-embedded mouse brain using RPS3A Rabbit polyclonal antibody (STJ28158) at dilution of 1:100 (40x lens). Perform microwave antigen retrieval with 10 mM PBS buffer pH 7. 2 before commencing with immunohistochemistry staining protocol.



Immunohistochemistry analysis of RPS3A in paraffin-embedded human liver cancer using RPS3A Rabbit polyclonal antibody (STJ28158) at dilution of 1:100 (40x lens). Perform microwave antigen retrieval with 10 mM PBS buffer pH 7. 2 before commencing with immunohistochemistry staining protocol.



Immunohistochemistry analysis of RPS3A in paraffin-embedded rat brain using RPS3A Rabbit polyclonal antibody (STJ28158) at dilution of 1:100 (40x lens). Perform microwave antigen retrieval with 10 mM PBS buffer pH 7. 2 before commencing with immunohistochemistry staining protocol.



Western blot analysis of various lysates using RPS3A Rabbit polyclonal antibody (STJ28158) at 1:1000 dilution. Secondary antibody: HRP Goat Anti-Rabbit IgG (H+L) (STJS000856) at 1:10000 dilution. Lysates/proteins: 25 Mu g per lane. Blocking buffer: 3% nonfat dry milk in TBST. Detection: ECL Basic Kit. Exposure time: 90s.