

Anti-ATP5A1 antibody (1-280) (STJ28157)

GENERAL INFORMATION

Product Type	Primary antibodies
Applications	WB/IF/ICC/ELISA
Host / Source	Rabbit
Reactivity	Human/Mouse/Rat

PRODUCT PROPERTIES

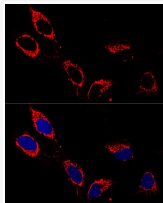
Clonality	Polyclonal
Concentration	Lot specific
Conjugation	Unconjugated
Purification	Affinity purification
Dilution Range	WB:1:500-1:1000 IF/CC:1:50-1:200 ELISA:Recommended starting concentration is 1 μ g/mL. Please optimize the concentration based on your specific assay requirements.
Formulation	PBS with 0.09% Sodium Azide, 50% Glycerol, pH7.3.
Isotype	IgG
Molecular Weight	Protein Mw: 60kDa Observed Mw: 53kDa
Storage Instruction	Store at -20°C for up to 1 year from the date of receipt, and avoid repeat freeze-thaw cycles.

TARGET INFORMATION

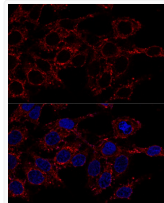
Gene ID	498
Gene Symbol	ATP5F1A
UniProt ID	ATPA_HUMAN
Immunogen Region	1-280
Immunogen Sequence	MLSVRVAAAVVRALPRRAGL VSRNALGSSFIAARNFHASN THLQKTGTAE MSSILEERIL GADTSVDLEETGRVLSIGDG IARVHGLRNVQAEEMVEFSS GLKGMSLNLEPDNVGVVVF NDKLIKEGDIVKRTGAIVDV PVGEELLGRVVDALGNAIDG KGPFGSKTRRRVGLKAPGII PRISVREPMQTGIKAVDSL VPIGRGQRELIIGDRQTGKTS IAIDTIINQKRFNDGSDEK
Specificity	Recombinant fusion protein containing a sequence corresponding to amino acids 1-280 of human ATP5A1 (NP_004037.1).

ADDITIONAL INFORMATION

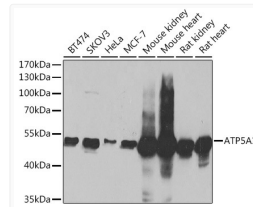
Note STRICTLY FOR FURTHER SCIENTIFIC RESEARCH USE ONLY (RUO). MUST NOT TO BE USED IN DIAGNOSTIC OR THERAPEUTIC APPLICATIONS.



Confocal immunofluorescence analysis of U-2OS cells using ATP5A1 antibody (STJ28157) at dilution of 1:200. Blue: DAPI for nuclear staining.



Confocal immunofluorescence analysis of HeLa cells using ATP5A1 antibody (STJ28157) at dilution of 1:200. Blue: DAPI for nuclear staining.



Western blot analysis of extracts of various cell lines, using ATP5A1 Antibody (STJ28157) at 1:1000 dilution. Secondary antibody: HRP Goat Anti-Rabbit IgG (H+L) (STJS000856) at 1:10000 dilution. Lysates/proteins: 25 μ g per lane. Blocking buffer: 3% nonfat dry milk in TBST. Detection: ECL Basic Kit. Exposure time: 1s.