

Anti-RPS10 antibody (1-165) (STJ28153)

GENERAL INFORMATION

Product Type	Primary antibodies
Applications	WB/IHC-P/IF/ICC/IP/ELISA
Host / Source	Rabbit
Reactivity	Human/Mouse/Rat

PRODUCT PROPERTIES

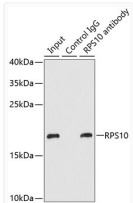
Clonality	Polyclonal
Concentration	Lot specific
Conjugation	Unconjugated
Purification	Affinity purification
Dilution Range	WB:1:1000-1:5000 IHC-P:1:50-1:200 IF/CC:1:100-1:500 IP:0.5 Mu g-4 Mu g antibody for 200 Mu g-400 Mu g extracts of whole cells ELISA:Recommended starting concentration is 1 Mu g/mL. Please optimize the concentration based on your spec
Formulation	PBS with 0.05% Proclin300, 50% Glycerol, pH7.3.
Isotype	IgG
Molecular Weight	Protein Mw: 19kDa Observed Mw: 19kDa
Storage Instruction	Store at-20°C for up to 1 year from the date of receipt, and avoid repeat freeze-thaw cycles.

TARGET INFORMATION

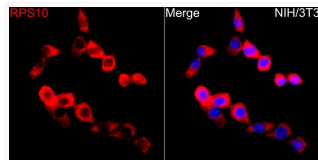
Gene ID	6204
Gene Symbol	RPS10
UniProt ID	RS10_HUMAN
Immunogen Region	1-165
Immunogen Sequence	MLMPKKNRIAIYELLFKEGV MVAKKDVHMPKHPADKNV PNLHVMKAMQSLKSRGYVKE QFAWRHFYWYLTNEGIQYLR DYHLHPPEIVPATLRRSRPE TGRPRPKGLEGERPARLTRG EADRDTYRRSAVPPGADKKA EAGAGSATEFQFRGGFGGRGR GQPPQ
Specificity	Recombinant fusion protein containing a sequence corresponding to amino acids 1-165 of human RPS10 (NP_001190174.1).

ADDITIONAL INFORMATION

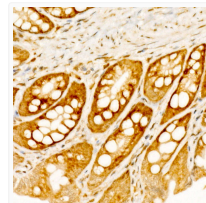
Note STRICTLY FOR FURTHER SCIENTIFIC RESEARCH USE ONLY (RUO). MUST NOT TO BE USED IN DIAGNOSTIC OR THERAPEUTIC APPLICATIONS.



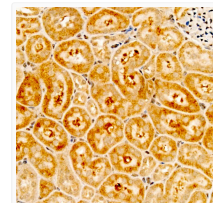
Immunoprecipitation analysis of 200 Mu g extracts of MCF-7 cells using 1 Mu g RPS10 antibody (STJ28153). Western blot was performed from the immunoprecipitate using RPS10 antibody (STJ28153) at a dilution of 1:1000.



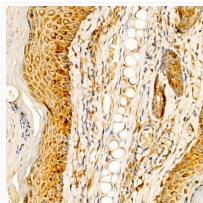
Immunofluorescence analysis of NIH/3T3 cells using RPS10 Rabbit polyclonal antibody (STJ28153) at a dilution of 1:500 (40x lens). Secondary antibody: Cy3 Goat Anti-Rabbit IgG (H+L) at 1:500 dilution. Blue: DAPI for nuclear staining.



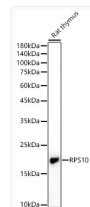
Immunohistochemistry analysis of RPS10 in paraffin-embedded rat colon tissue using RPS10 Rabbit polyclonal antibody (STJ28153) at a dilution of 1:200 (40x lens). High pressure antigen retrieval was performed with 0.01 M citrate buffer (pH 6.0) prior to immunohistochemistry staining.



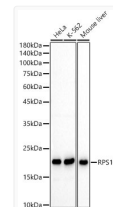
Immunohistochemistry analysis of RPS10 in paraffin-embedded mouse kidney tissue using RPS10 Rabbit polyclonal antibody (STJ28153) at a dilution of 1:200 (40x lens). High pressure antigen retrieval was performed with 0.01 M citrate buffer (pH 6.0) prior to immunohistochemistry staining.



Immunohistochemistry analysis of RPS10 in paraffin-embedded human skin tissue using RPS10 Rabbit polyclonal antibody (STJ28153) at a dilution of 1:200 (40x lens). High pressure antigen retrieval was performed with 0.01 M citrate buffer (pH 6.0) prior to immunohistochemistry staining.



Western blot analysis of lysates from Rat thymus using RPS10 Rabbit polyclonal antibody (STJ28153) at 1:2000 dilution. Secondary antibody: HRP Goat Anti-Rabbit IgG (H+L) (STJS000856) at 1:10000 dilution. Lysates/proteins: 25 Mu g per lane. Blocking buffer: 3% nonfat dry milk in TBST. Detection: ECL Basic Kit. Exposure time: 180s.



Western blot analysis of various lysates using RPS10 Rabbit polyclonal antibody (STJ28153) at 1:2000 dilution. Secondary antibody: HRP Goat Anti-Rabbit IgG (H+L) (STJS000856) at 1:10000 dilution. Lysates/ proteins: 25 Mu g per lane. Blocking buffer: 3% nonfat dry milk in TBST. Detection: ECL Basic Kit. Exposure time: 30s.