

## Anti-SF3B2 antibody (616-895) (STJ28148)

### GENERAL INFORMATION

Product Type	Primary antibodies
Applications	WB/IHC-P/IF/ICC/ELISA
Host / Source	Rabbit
Reactivity	Human/Mouse/Rat

### PRODUCT PROPERTIES

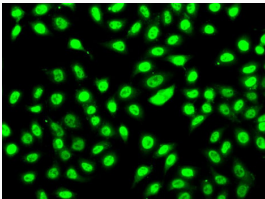
Clonality	Polyclonal
Concentration	Lot specific
Conjugation	Unconjugated
Purification	Affinity purification
Dilution Range	WB:1:500-1:2000 IHC-P:1:50-1:200 IF/CC:1:50-1:200 ELISA:Recommended starting concentration is 1 Mu g/mL. Please optimize the concentration based on your specific assay requirements.
Formulation	PBS with 0.02% Sodium Azide, 50% Glycerol, pH 7.3.
Isotype	IgG
Molecular Weight	Protein Mw: 100kDa Observed Mw: 140kDa
Storage Instruction	Store at -20°C for up to 1 year from the date of receipt, and avoid repeat freeze-thaw cycles.

### TARGET INFORMATION

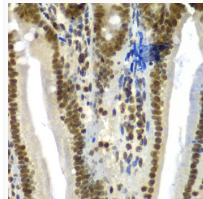
Gene ID	<a href="#">10992</a>
Gene Symbol	<a href="#">SF3B2</a>
UniProt ID	<a href="#">SF3B2_HUMAN</a>
Immunogen Region	616-895
Immunogen Sequence	SLGMPVGPNAHKVPPPWLIA MQRYGPPSYPNLKIPGLNS PIPESCSFGYHAGGWGKPPV DETGKPLYGDVFGTNAAEFQ TKTEEEEEIDRTPWGELEPSD EESSEEEEESEDEDKPDET GFITPADSGLITPGGFSSVP AGMETPELIELRKKKIEEAM DGSETPQLFTVLPEKRTATV GGAMMGSTHIYDMSTVMSRK GPAPELQGVVVALAPEEEL DPMAMTQKYEEHVREQQAQ
Specificity	Recombinant fusion protein containing a sequence corresponding to amino acids 616-895 of human SF3B2 (NP_006833.2).

### ADDITIONAL INFORMATION

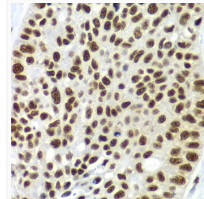
Note STRICTLY FOR FURTHER SCIENTIFIC RESEARCH USE ONLY (RUO). MUST NOT TO BE USED IN DIAGNOSTIC OR THERAPEUTIC APPLICATIONS.



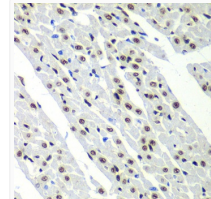
Immunofluorescence analysis of A-549 cells using SF3B2 antibody (STJ28148).



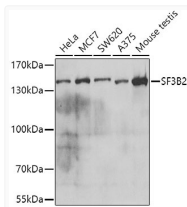
Immunohistochemistry analysis of paraffin-embedded mouse Intestine using SF3B2 antibody (STJ28148) at dilution of 1:100 (40x lens). Perform microwave antigen retrieval with 10 mM PBS buffer pH 7. 2 before commencing with immunohistochemistry staining protocol.



Immunohistochemistry analysis of paraffin-embedded human lung cancer using SF3B2 antibody (STJ28148) at dilution of 1:100 (40x lens). Perform microwave antigen retrieval with 10 mM PBS buffer pH 7. 2 before commencing with immunohistochemistry staining protocol.



Immunohistochemistry analysis of paraffin-embedded rat heart using SF3B2 antibody (STJ28148) at dilution of 1:100 (40x lens). Perform microwave antigen retrieval with 10 mM PBS buffer pH 7. 2 before commencing with immunohistochemistry staining protocol.



Western blot analysis of extracts of various cell lines, using SF3B2 antibody (STJ28148) at 1:1000 dilution. Secondary antibody: HRP Goat Anti-Rabbit IgG (H+L) (STJS000856) at 1:10000 dilution. Lysates/proteins: 25 Mu g per lane. Blocking buffer: 3% nonfat dry milk in TBST. Detection: ECL Basic Kit. Exposure time: 5s.