

Anti-KAT5 antibody (182-282) (STJ28062)

GENERAL INFORMATION

Product Type	Primary antibodies
Applications	WB/IF/ICC/ELISA
Host / Source	Rabbit
Reactivity	Human/Mouse/Rat

PRODUCT PROPERTIES

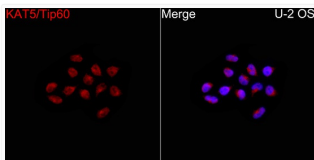
Clonality	Polyclonal
Concentration	Lot specific
Conjugation	Unconjugated
Purification	Affinity purification
Dilution Range	WB:1:500-1:1000 IF/CC:1:50-1:200 ELISA:Recommended starting concentration is 1 Mu g/mL. Please optimize the concentration based on your specific assay requirements.
Formulation	PBS with 0.05% Proclin300, 50% Glycerol, pH 7.3.
Isotype	IgG
Molecular Weight	Protein Mw: 59kDa Observed Mw: 60kDa
Storage Instruction	Store at -20°C for up to 1 year from the date of receipt, and avoid repeat freeze-thaw cycles.

TARGET INFORMATION

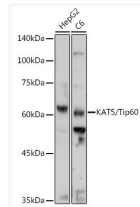
Gene ID	10524
Gene Symbol	KAT5
UniProt ID	KAT5_HUMAN
Immunogen Region	182-282
Immunogen Sequence	MAEVGEIIEGCRPLPVLRRNQ DNEDEWPLAEILSVKDISGR KLFYVHYIDFNKRLDEWVTH ERLDLKKIQFPPKKEAKTPK NGLPGSRPGSPEREVPASAQ ASGKTLPIPVQITLRFNLPK EREAIPEGEPDQPLSSSSCL QPNHRSTKRKVEVVSPATPV PSETAPASVFPQNGAARRAV AAQPGRKRKSNCLGTDEDSQ DSSDGIPSA PRMTGSLVSDR SHDDIVTRMK
Specificity	Recombinant fusion protein containing a sequence corresponding to amino acids 1-230 of human KAT5/Tip60 (NP_006379.2).

ADDITIONAL INFORMATION

Note **STRICTLY FOR FURTHER SCIENTIFIC RESEARCH USE ONLY (RUO). MUST NOT TO BE USED IN DIAGNOSTIC OR THERAPEUTIC APPLICATIONS.**



Immunofluorescence analysis of U-2 OS cells using KAT5/Tip60 Rabbit polyclonal antibody (STJ28062) at a dilution of 1:100 (40x lens). Secondary antibody: Cy3-conjugated Goat anti-Rabbit IgG (H+L) at 1:500 dilution. Blue: DAPI for nuclear staining.



Western blot analysis of various lysates using KAT5/Tip60 Rabbit polyclonal antibody (STJ28062) at 1:500 dilution. Secondary antibody: HRP Goat Anti-Rabbit IgG (H+L) (STJS000856) at 1:10000 dilution. Lysates/proteins: 25 Mu g per lane. Blocking buffer: 3% nonfat dry milk in TBST. Detection: ECL Basic Kit. Exposure time: 30s.