

Anti-CHAF1B antibody (270-559) (STJ28015)

GENERAL INFORMATION

Product Type	Primary antibodies
Applications	WB/IHC-P/ELISA
Host / Source	Rabbit
Reactivity	Human/Mouse/Rat

PRODUCT PROPERTIES

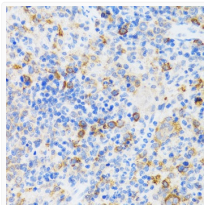
Clonality	Polyclonal
Concentration	Lot specific
Conjugation	Unconjugated
Purification	Affinity purification
Dilution Range	WB:1:500-1:2000 IHC-P:1:50-1:200 ELISA:Recommended starting concentration is 1 μ g/mL. Please optimize the concentration based on your specific assay requirements.
Formulation	PBS with 0.02% Sodium Azide, 50% Glycerol, pH 7.3.
Isotype	IgG
Molecular Weight	Protein Mw: 61kDa Observed Mw: 70kDa
Storage Instruction	Store at -20°C for up to 1 year from the date of receipt, and avoid repeat freeze-thaw cycles.

TARGET INFORMATION

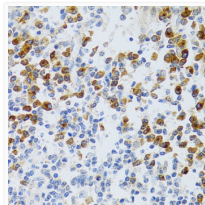
Gene ID	8208
Gene Symbol	CHAF1B
UniProt ID	CAF1B_HUMAN
Immunogen Region	270-559
Immunogen Sequence	SRKNLKRPIAHLPCPGKATL AVRCCPVYFELRPVETGVE LMSLPYRLVFAVASEDSVLL YDTQQSFPGYVSNHYHTL SDISWSSDGAFLAISSTDGY CSFVTFEKDELGIPLKEKPV LNMRTPTDAKTKSQTHRGS SPGPRPVEGTPASRTQDPSS PGTTTPQARQAPAPTVIDRP PSITPAVKSPPLPGPSEKTL QPSSQNTKAHPSRRVTLNLT QAWSKTTPRRINLTPLKTD
Specificity	Recombinant fusion protein containing a sequence corresponding to amino acids 270-559 of human p60 CAF1 (NP_005432.1).

ADDITIONAL INFORMATION

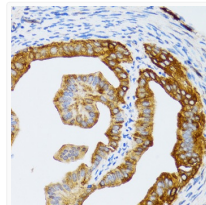
Note **STRICTLY FOR FURTHER SCIENTIFIC RESEARCH USE ONLY (RUO). MUST NOT TO BE USED IN DIAGNOSTIC OR THERAPEUTIC APPLICATIONS.**



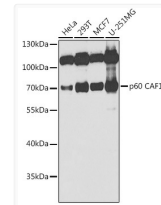
Immunohistochemistry analysis of paraffin-embedded mouse spleen using p60 CAF1 antibody (STJ28015) at dilution of 1:100 (40x lens). Perform microwave antigen retrieval with 10 mM PBS buffer pH 7.2 before commencing with immunohistochemistry staining protocol.



Immunohistochemistry analysis of paraffin-embedded human tonsil using p60 CAF1 antibody (STJ28015) at dilution of 1:100 (40x lens). Perform microwave antigen retrieval with 10 mM PBS buffer pH 7.2 before commencing with immunohistochemistry staining protocol.



Immunohistochemistry analysis of paraffin-embedded rat fallopian tube using p60 CAF1 antibody (STJ28015) at dilution of 1:100 (40x lens). Perform microwave antigen retrieval with 10 mM PBS buffer pH 7.2 before commencing with immunohistochemistry staining protocol.



Western blot analysis of extracts of various cell lines, using p60 CAF1 antibody (STJ28015) at 1:1000 dilution. Secondary antibody: HRP Goat Anti-Rabbit IgG (H+L) (STJS000856) at 1:10000 dilution. Lysates/proteins: 25 μ g per lane. Blocking buffer: 3% nonfat dry milk in TBST. Detection: ECL Enhanced Kit. Exposure time: 30s.