

Anti-SERPINB1 antibody (100-379) (STJ28013)

GENERAL INFORMATION

Product Type	Primary antibodies
Applications	WB/IHC-P/IF/ICC/ELISA
Host / Source	Rabbit
Reactivity	Human/Mouse/Rat

PRODUCT PROPERTIES

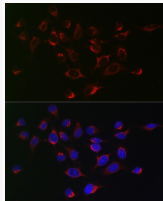
Clonality	Polyclonal
Concentration	Lot specific
Conjugation	Unconjugated
Purification	Affinity purification
Dilution Range	WB:1:500-1:1000 IHC-P:1:50-1:200 IF/ICC:1:50-1:200 ELISA:Recommended starting concentration is 1 µg/mL. Please optimize the concentration based on your specific assay requirements.
Formulation	PBS with 0.05% Proclin300, 50% Glycerol, pH 7.3.
Isotype	IgG
Molecular Weight	Protein Mw: 43kDa Observed Mw: 45kDa
Storage Instruction	Store at -20°C for up to 1 year from the date of receipt, and avoid repeat freeze-thaw cycles.

TARGET INFORMATION

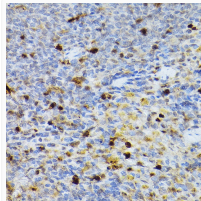
Gene ID	1992
Gene Symbol	SERPINB1
UniProt ID	ILEU_HUMAN
Immunogen Region	100-379
Immunogen Sequence	FLPEFLVSTQKTYGADLASV DFQHASEDARKTINQWVKGQ TEGKIPELLASGMVDNMTKL VLVNAIYFKGNWVKDFMKEA TTNAPFRLNKKDRKTVKMMY QKKKFAYGYIEDLKCRVLEL PYQGEELSMVILLPDDIEDE STGLKIEEQLTLEKLHEWT KPENLDFIEVNVSLPRFKLE ESYTLNSDLARLGVQDLFNS SKADLSGMSGARDIFISKIV HKSFVEVNEEGTEAAAAATA
Specificity	Recombinant fusion protein containing a sequence corresponding to amino acids 100-379 of human SERPINB1 (NP_109591.1).

ADDITIONAL INFORMATION

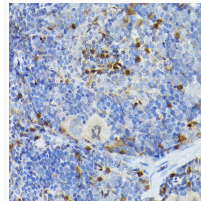
Note **STRICTLY FOR FURTHER SCIENTIFIC RESEARCH USE ONLY (RUO). MUST NOT TO BE USED IN DIAGNOSTIC OR THERAPEUTIC APPLICATIONS.**



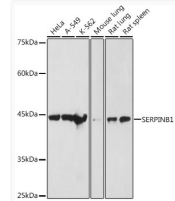
Immunofluorescence analysis of HeLa cells using SERPINB1 Rabbit polyclonal antibody (STJ28013) at dilution of 1:50 (40x lens). Blue: DAPI for nuclear staining.



Immunohistochemistry analysis of paraffin-embedded rat spleen using SERPINB1 Rabbit polyclonal antibody (STJ28013) at dilution of 1:100 (40x lens). Perform high pressure antigen retrieval with 10 mM citrate buffer pH 6.0 before commencing with immunohistochemistry staining protocol.



Immunohistochemistry analysis of paraffin-embedded mouse spleen using SERPINB1 Rabbit polyclonal antibody (STJ28013) at dilution of 1:100 (40x lens). Perform high pressure antigen retrieval with 10 mM citrate buffer pH 6.0 before commencing with immunohistochemistry staining protocol.



Western blot analysis of extracts of various cell lines, using SERPINB1 antibody (STJ28013) at 1:1000 dilution. Secondary antibody: HRP Goat Anti-Rabbit IgG (H+L) (STJS000856) at 1:10000 dilution. Lysates/proteins: 25 µg per lane. Blocking buffer: 3% nonfat dry milk in TBST. Detection: ECL Basic Kit. Exposure time: 1s.