

## Anti-OAT antibody (160-439) (STJ27991)

### GENERAL INFORMATION

Product Type	Primary antibodies
Applications	WB/IHC-P/IP/ELISA
Host / Source	Rabbit
Reactivity	Human/Mouse/Rat

### PRODUCT PROPERTIES

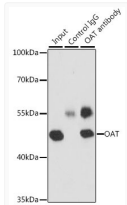
Clonality	Polyclonal
Concentration	Lot specific
Conjugation	Unconjugated
Purification	Affinity purification
Dilution Range	WB:1:500-1:2000 IHC-P:1:50-1:200 IP:0.5 Mu g-4 Mu g antibody for 200 Mu g-400 Mu g extracts of whole cells ELISA:Recommended starting concentration is 1 Mu g/mL. Please optimize the concentration based on your specific assay requirements.
Formulation	PBS with 0.02% Sodium Azide, 50% Glycerol, pH 7.3.
Isotype	IgG
Molecular Weight	Protein Mw: 49kDa Observed Mw: 49kDa
Storage Instruction	Store at -20°C for up to 1 year from the date of receipt, and avoid repeat freeze-thaw cycles.

### TARGET INFORMATION

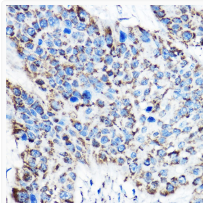
Gene ID	<a href="#">4942</a>
Gene Symbol	<a href="#">OAT</a>
UniProt ID	<a href="#">OAT_HUMAN</a>
Immunogen Region	160-439
Immunogen Sequence	VKGIQKYKAKIVFAAGNFWG RLSAISSTDPTSVDGFGP FMPGFDIIPYNDLPALERAL QDPNVAAFMVEPIQGEAGVV VPDPGYLMGVRELCTRHQVL FIADEIQTGLARTGRWLAVD YENVRPDIVLLGKALSGGLY PVSAVLCDDDDIMLTIKPGEH GSTYGGNPLGCRVAIAALEV LEEENLAENADKLGILRNE LMKLPDSDVVTAVRGKGLLNA IVIKETKDWDAWKVCLRLR
Specificity	Recombinant fusion protein containing a sequence corresponding to amino acids 160-439 of human OAT (NP_000265.1).

### ADDITIONAL INFORMATION

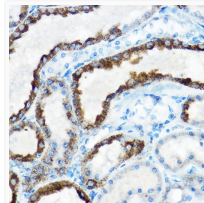
Note STRICTLY FOR FURTHER SCIENTIFIC RESEARCH USE ONLY (RUO). MUST NOT TO BE USED IN DIAGNOSTIC OR THERAPEUTIC APPLICATIONS.



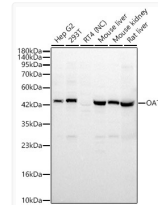
Immunoprecipitation analysis of 200 Mu g extracts of MCF-7 cells, using 3 Mu g OAT antibody (STJ27991). Western blot was performed from the immunoprecipitate using OAT antibody (STJ27991) at a dilution of 1:1000.



Immunohistochemistry analysis of OAT in paraffin-embedded human esophageal cancer using OAT Rabbit polyclonal antibody (STJ27991) at dilution of 1:100 (40x lens). Perform high pressure antigen retrieval with 10 mM citrate buffer pH 6.0 before commencing with immunohistochemistry staining protocol.



Immunohistochemistry analysis of OAT in paraffin-embedded rat kidney using OAT Rabbit polyclonal antibody (STJ27991) at dilution of 1:100 (40x lens). Perform high pressure antigen retrieval with 10 mM citrate buffer pH 6.0 before commencing with immunohistochemistry staining protocol.



Western blot analysis of various lysates using OAT Rabbit polyclonal antibody (STJ27991) at 1:2000 dilution. Secondary antibody:HRP Goat Anti-Rabbit IgG (H+L) (STJS000856) at 1:10000 dilution. Lysates/proteins: 25 Mu g per lane. Blocking buffer: 3% nonfat dry milk in TBST. Detection:ECL Basic Kit. Negative control (NC) : RT4. Exposure time: 30s.