

Anti-CBX8 antibody (80-280) (STJ27978)

GENERAL INFORMATION

Product Type	Primary antibodies
Applications	WB/IHC-P/ELISA
Host / Source	Rabbit
Reactivity	Human/Mouse/Rat

PRODUCT PROPERTIES

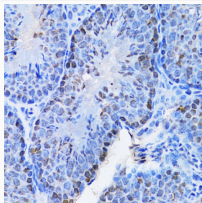
Clonality	Polyclonal
Concentration	Lot specific
Conjugation	Unconjugated
Purification	Affinity purification
Dilution Range	WB:1:500-1:2000 IHC-P:1:50-1:200 ELISA:Recommended starting concentration is 1 µg/mL. Please optimize the concentration based on your specific assay requirements.
Formulation	PBS with 0.02% Sodium Azide, 50% Glycerol, pH 7.3.
Isotype	IgG
Molecular Weight	Protein Mw: 43kDa Observed Mw: 50kDa
Storage Instruction	Store at -20°C for up to 1 year from the date of receipt, and avoid repeat freeze-thaw cycles.

TARGET INFORMATION

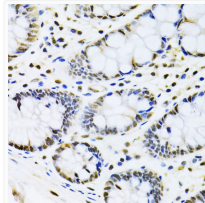
Gene ID	57332
Gene Symbol	CBX8
UniProt ID	CBX8_HUMAN
Immunogen Region	80-280
Immunogen Sequence	LLKAQAKAKAKTYEFRSDSA RGIRIPYGRSPQDLASTSR AREGLRNMGLSPPASSTSTS STCRAEAPRDRDRDRDRDRE RDRERERERERERERERERE RGTSRVDDKPSSPGDSSKKR GPKPRKELPDPSPQRPLGEPG AGLGEYLKGRKLDTPSGAG KFPAGHSVIQLARRQDSDLV QCGVTSPSSAEATGKLAVDT F
Specificity	Recombinant fusion protein containing a sequence corresponding to amino acids 80-280 of human CBX8 (NP_065700.1).

ADDITIONAL INFORMATION

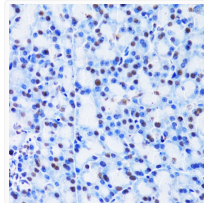
Note STRICTLY FOR FURTHER SCIENTIFIC RESEARCH USE ONLY (RUO). MUST NOT TO BE USED IN DIAGNOSTIC OR THERAPEUTIC APPLICATIONS.



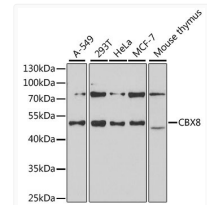
Immunohistochemistry analysis of paraffin-embedded mouse testis using CBX8 Antibody (STJ27978) at dilution of 1:100 (40x lens). Perform microwave antigen retrieval with 10 mM PBS buffer pH 7.2 before commencing with immunohistochemistry staining protocol.



Immunohistochemistry analysis of paraffin-embedded human colon using CBX8 Antibody (STJ27978) at dilution of 1:100 (40x lens). Perform microwave antigen retrieval with 10 mM PBS buffer pH 7.2 before commencing with immunohistochemistry staining protocol.



Immunohistochemistry analysis of paraffin-embedded rat pancreas using CBX8 Antibody (STJ27978) at dilution of 1:100 (40x lens). Perform microwave antigen retrieval with 10 mM PBS buffer pH 7.2 before commencing with immunohistochemistry staining protocol.



Western blot analysis of extracts of various cell lines, using CBX8 antibody (STJ27978) at 1:1000 dilution. Secondary antibody: HRP Goat Anti-Rabbit IgG (H+L) (STJS000856) at 1:10000 dilution. Lysates/proteins: 25 µg per lane. Blocking buffer: 3% nonfat dry milk in TBST. Detection: ECL Basic Kit. Exposure time: 60s.