

## Anti-IL22 antibody (34-179) (STJ27972)

### GENERAL INFORMATION

Product Type	Primary antibodies
Applications	WB/IF/ICC/ELISA
Host / Source	Rabbit
Reactivity	Human/Mouse/Rat

### PRODUCT PROPERTIES

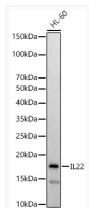
Clonality	Polyclonal
Concentration	Lot specific
Conjugation	Unconjugated
Purification	Affinity purification
Dilution Range	WB:1:500-1:1000 IF/CC:1:50-1:200 ELISA:Recommended starting concentration is 1 Mu g/mL. Please optimize the concentration based on your specific assay requirements.
Formulation	PBS with 0.05% Proclin300, 50% Glycerol, pH 7.3.
Isotype	IgG
Molecular Weight	Protein Mw: 20kDa Observed Mw: 16kDa
Storage Instruction	Store at -20°C for up to 1 year from the date of receipt, and avoid repeat freeze-thaw cycles.

### TARGET INFORMATION

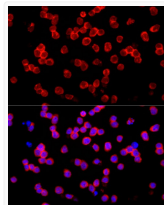
Gene ID	<a href="#">50616</a>
Gene Symbol	<a href="#">IL22</a>
UniProt ID	<a href="#">IL22_HUMAN</a>
Immunogen Region	34-179
Immunogen Sequence	APISSHCRLDKSNFQQPYIT NRTFMLAKEASLADNNTDVR LIGEKLFHGVSMSERCYLMK QVLNFTLEEVLPQSDRFQP YMQEVVPFLARLSNRLSTCH IEGDDLHIQRNVQKLDTVK KLGESGEIKAIGELDLLFMS LRNACI
Specificity	Recombinant fusion protein containing a sequence corresponding to amino acids 34-179 of human IL22 (NP_065386.1).

### ADDITIONAL INFORMATION

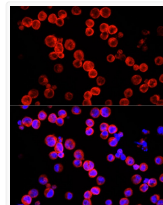
Note **STRICTLY FOR FURTHER SCIENTIFIC RESEARCH USE ONLY (RUO). MUST NOT TO BE USED IN DIAGNOSTIC OR THERAPEUTIC APPLICATIONS.**



Western blot analysis of HL-60, using IL22 antibody (STJ27972) at 1:900 dilution. Secondary antibody: HRP Goat Anti-rabbit IgG (H+L) (STJS000856) at 1:10000 dilution. Lysates/proteins: 25 Mu g per lane. Blocking buffer: 3% non-fat dry milk in TBST. Detection: ECL Basic Kit. Exposure time: 180s.



Immunofluorescence analysis of HL-60 cells using IL22 rabbit polyclonal antibody (STJ27972) at dilution of 1:100 (40x lens). Blue: DAPI for nuclear staining.



Immunofluorescence analysis of Raji cells using IL22 rabbit polyclonal antibody (STJ27972) at dilution of 1:100 (40x lens). Blue: DAPI for nuclear staining.