

Anti-SERPINE1 antibody (24-199) (STJ27967)

GENERAL INFORMATION

Product Type	Primary antibodies
Applications	WB/IF/ICC/ELISA
Host / Source	Rabbit
Reactivity	Human/Mouse/Rat

PRODUCT PROPERTIES

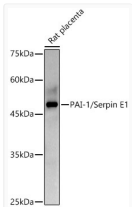
Clonality	Polyclonal
Concentration	Lot specific
Conjugation	Unconjugated
Purification	Affinity purification
Dilution Range	WB:1:500-1:1000 IF/CC:1:50-1:200 ELISA:Recommended starting concentration is 1 Mu g/mL. Please optimize the concentration based on your specific assay requirements.
Formulation	PBS with 0.05% Proclin300, 50% Glycerol, pH 7.3.
Isotype	IgG
Molecular Weight	Protein Mw: 45kDa Observed Mw: 48kDa
Storage Instruction	Store at -20°C for up to 1 year from the date of receipt, and avoid repeat freeze-thaw cycles.

TARGET INFORMATION

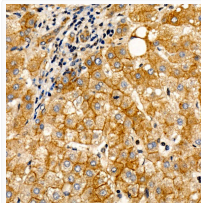
Gene ID	5054
Gene Symbol	SERPINE1
UniProt ID	PAI1_HUMAN
Immunogen Region	24-199
Immunogen Sequence	AQASKDRNVVFSYGVASVL AMLQLTTGGGETQQQIQAAAMG FKIDDKGMAPALRHLKELM GPWNKDEISTTDAIFVQRDL KLVQGFMPHFFRFRSTVKQ VDFSEVERARFIINDWVKTH TKGMISNLLGKGAVDQLTRL VLVNLYFNGQWKTPFPDSS THRRLFHKSDGSTVSV
Specificity	A synthetic peptide corresponding to a sequence within amino acids 24-199 of human PAI-1/Serpin E1 (NP_000593.1).

ADDITIONAL INFORMATION

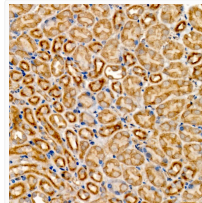
Note **STRICTLY FOR FURTHER SCIENTIFIC RESEARCH USE ONLY (RUO). MUST NOT TO BE USED IN DIAGNOSTIC OR THERAPEUTIC APPLICATIONS.**



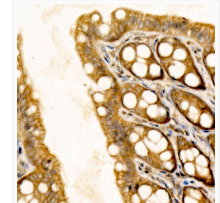
Western blot analysis of extracts of Rat placenta, using PAI-1/Serpin E1 antibody (STJ27967) at 1:1000 dilution. Secondary antibody: HRP Goat Anti-rabbit IgG (H+L) (STJS000856) at 1:10000 dilution. Lysates/proteins: 25 Mu g per lane. Blocking buffer: 3% non-fat dry milk in TBST. Detection: ECL Basic Kit. Exposure time: 180s.



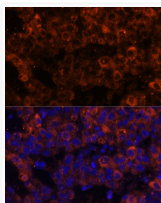
Immunohistochemistry analysis of PAI-1/Serpin E1 in paraffin-embedded human liver tissue using PAI-1/Serpin E1 rabbit polyclonal antibody (STJ27967) at a dilution of 1:300 (40x lens). High pressure antigen retrieval was performed with 0.01 M citrate buffer (pH 6.0) prior to immunohistochemistry staining.



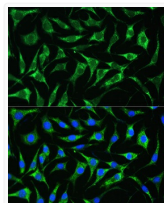
Immunohistochemistry analysis of PAI-1/Serpin E1 in paraffin-embedded mouse kidney tissue using PAI-1/Serpin E1 rabbit polyclonal antibody (STJ27967) at a dilution of 1:300 (40x lens). High pressure antigen retrieval was performed with 0.01 M citrate buffer (pH 6.0) prior to immunohistochemistry staining.



Immunohistochemistry analysis of PAI-1/Serpin E1 in paraffin-embedded rat colon tissue using PAI-1/Serpin E1 rabbit polyclonal antibody (STJ27967) at a dilution of 1:300 (40x lens). High pressure antigen retrieval was performed with 0.01 M citrate buffer (pH 6.0) prior to immunohistochemistry staining.



Immunofluorescence analysis of human liver cancer using PAI-1/Serpin E1 Polyclonal Antibody (STJ27967) at dilution of 1:100 (40x lens). Blue: DAPI for nuclear staining.



Immunofluorescence analysis of L929 cells using PAI-1/Serpin E1 antibody (STJ27967) at dilution of 1:100. Blue: DAPI for nuclear staining.