

Anti-ITGA5 antibody (750-1000) (STJ27965)

GENERAL INFORMATION

Product Type	Primary antibodies
Applications	WB/IF/ICC/ELISA
Host / Source	Rabbit
Reactivity	Human/Mouse/Rat

PRODUCT PROPERTIES

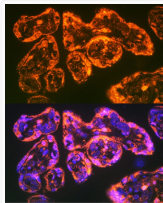
Clonality	Polyclonal
Concentration	Lot specific
Conjugation	Unconjugated
Purification	Affinity purification
Dilution Range	WB:1:500-1:2000 IF/CC:1:50-1:200 ELISA:Recommended starting concentration is 1 µg/mL. Please optimize the concentration based on your specific assay requirements.
Formulation	PBS with 0.02% Sodium Azide, 50% Glycerol, pH 7.3.
Isotype	IgG
Molecular Weight	Protein Mw: 115kDa Observed Mw: 135kDa
Storage Instruction	Store at -20°C for up to 1 year from the date of receipt, and avoid repeat freeze-thaw cycles.

TARGET INFORMATION

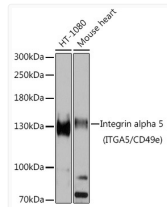
Gene ID	3678
Gene Symbol	ITGA5
UniProt ID	IT5_HUMAN
Immunogen Region	750-1000
Immunogen Sequence	TVPHLRDTKKTIQDFQILS KNLNNSQSDVVSFRLSVEAQ AQVTLNGVSKPEAVLFPVSD WHPRDQPKKEEDLGPVHHV YELINQGPSSISQGVLELSC PQALEGQQLLYVTRVTLNLC TTNHPINPKGLELDPEGLSH HQQKREAPSRSSASSGPQIL KCPAEACFRLRCELGPLHQQ ESQSLQLHFRVWAKTFLQRE HQPFLQCEAVYKALKMPYR ILPRQLPKKERQVATAVQW
Specificity	Recombinant fusion protein containing a sequence corresponding to amino acids 750-1000 of human Integrin alpha 5 (ITGA5/CD49e) (NP_002196.4).

ADDITIONAL INFORMATION

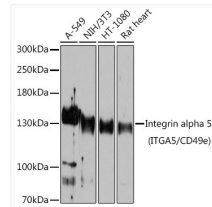
Note STRICTLY FOR FURTHER SCIENTIFIC RESEARCH USE ONLY (RUO). MUST NOT TO BE USED IN DIAGNOSTIC OR THERAPEUTIC APPLICATIONS.



Immunofluorescence analysis of Human placenta using Integrin alpha 5 (ITGA5/CD49e) antibody (STJ27965) at dilution of 1:100. Blue: DAPI for nuclear staining.



Western blot analysis of extracts of various cell lines, using Integrin alpha 5 (ITGA5/CD49e) antibody (STJ27965) at 1:1000 dilution. Secondary antibody: HRP Goat Anti-Rabbit IgG (H+L) (STJS000856) at 1:10000 dilution. Lysates/proteins: 25 µg per lane. Blocking buffer: 3% nonfat dry milk in TBST. Detection: ECL Enhanced Kit. Exposure time: 30s.



Western blot analysis of extracts of various cell lines, using Integrin alpha 5 (ITGA5/CD49e) antibody (STJ27965) at 1:1000 dilution. Secondary antibody: HRP Goat Anti-Rabbit IgG (H+L) (STJS000856) at 1:10000 dilution. Lysates/proteins: 25 µg per lane. Blocking buffer: 3% nonfat dry milk in TBST. Detection: ECL Basic Kit. Exposure time: 90s.