

Anti-BGLAP antibody (1-100) (STJ27961)

GENERAL INFORMATION

Product Type	Primary antibodies
Applications	WB/IF/ICC/ELISA
Host / Source	Rabbit
Reactivity	Human/Mouse/Rat

PRODUCT PROPERTIES

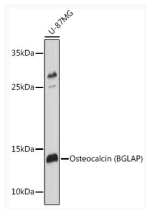
Clonality	Polyclonal
Concentration	Lot specific
Conjugation	Unconjugated
Purification	Affinity purification
Dilution Range	WB:1:500-1:1000 IF/CC:1:50-1:200 ELISA:Recommended starting concentration is 1 µg/mL. Please optimize the concentration based on your specific assay requirements.
Formulation	PBS with 0.09% Sodium Azide, 50% Glycerol, pH 7.3.
Isotype	IgG
Molecular Weight	Protein Mw: 11kDa Observed Mw: 12kDa
Storage Instruction	Store at -20°C for up to 1 year from the date of receipt, and avoid repeat freeze-thaw cycles.

TARGET INFORMATION

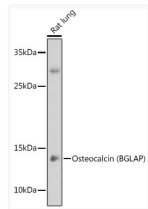
Gene ID	632
Gene Symbol	BGLAP
UniProt ID	OSTCN_HUMAN
Immunogen Region	1-100
Immunogen Sequence	MRALTLLALLALAALCIAGQ AGAKPSGAESSKGAAFVSKQ EGSEVVKRPRLRYLQWLGAP VPYDPLEPRREVCENPDC DELADHIGFQEAYRRFYGPV
Specificity	A synthetic peptide corresponding to a sequence within amino acids 1-100 of human Osteocalcin (BGLAP) (NP_954642.1).

ADDITIONAL INFORMATION

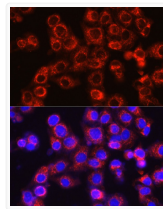
Note **STRICTLY FOR FURTHER SCIENTIFIC RESEARCH USE ONLY (RUO). MUST NOT TO BE USED IN DIAGNOSTIC OR THERAPEUTIC APPLICATIONS.**



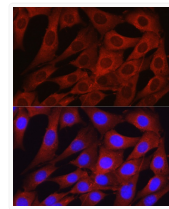
Western blot analysis of extracts of U-87MG cells, using Osteocalcin (BGLAP) antibody (STJ27961) at 1:1000 dilution. Secondary antibody: HRP Goat Anti-rabbit IgG (H+L) (STJS000856) at 1:10000 dilution. Lysates/proteins: 25 µg per lane. Blocking buffer: 3% non-fat dry milk in TBST. Detection: ECL Basic Kit. Exposure time: 1s.



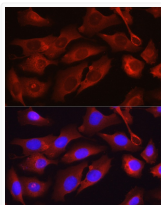
Western blot analysis of extracts of Rat lung, using Osteocalcin (BGLAP) antibody (STJ27961) at 1:1000 dilution. Secondary antibody: HRP Goat Anti-rabbit IgG (H+L) (STJS000856) at 1:10000 dilution. Lysates/proteins: 25 µg per lane. Blocking buffer: 3% non-fat dry milk in TBST. Detection: ECL Basic Kit. Exposure time: 180s.



Immunofluorescence analysis of MG-63 cells using Osteocalcin (BGLAP) rabbit polyclonal antibody (STJ27961) at dilution of 1:200 (40x lens). Blue: DAPI for nuclear staining.



Immunofluorescence analysis of NIH/3T3 cells using Osteocalcin (BGLAP) rabbit polyclonal antibody (STJ27961) at dilution of 1:200 (40x lens). Blue: DAPI for nuclear staining.



Immunofluorescence analysis of U2OS cells using Osteocalcin (BGLAP) rabbit polyclonal antibody (STJ27961) at dilution of 1:200 (40x lens). Blue: DAPI for nuclear staining.