

Anti-CRABP2 antibody (22-94) (STJ27930)

GENERAL INFORMATION

Product Type	Primary antibodies
Applications	WB/IF/ICC/ELISA
Host / Source	Rabbit
Reactivity	Human/Mouse/Rat

PRODUCT PROPERTIES

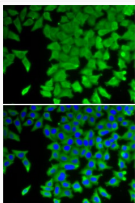
Clonality	Polyclonal
Concentration	Lot specific
Conjugation	Unconjugated
Purification	Affinity purification
Dilution Range	WB:1:500-1:2000 IF/CC:1:20-1:100 ELISA:Recommended starting concentration is 1 Mu g/mL. Please optimize the concentration based on your specific assay requirements.
Formulation	PBS with 0.02% Sodium Azide, 50% Glycerol, pH 7.3.
Isotype	IgG
Molecular Weight	Protein Mw: 16kDa Observed Mw: 15kDa
Storage Instruction	Store at -20°C for up to 1 year from the date of receipt, and avoid repeat freeze-thaw cycles.

TARGET INFORMATION

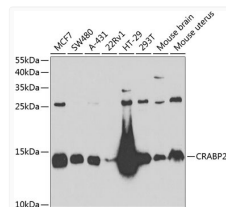
Gene ID	1382
Gene Symbol	CRABP2
UniProt ID	RABP2_HUMAN
Immunogen Region	22-94
Immunogen Sequence	VLGVNVMLRKIAVAASKPA VEIKQEGDTFYIKTSTTVRT TEINFKVGEEFEEQTVDGRP CKSLVKWESENKM
Specificity	Recombinant fusion protein containing a sequence corresponding to amino acids 22-94 of human CRABP2 (NP_001869.1).

ADDITIONAL INFORMATION

Note **STRICTLY FOR FURTHER SCIENTIFIC RESEARCH USE ONLY (RUO). MUST NOT TO BE USED IN DIAGNOSTIC OR THERAPEUTIC APPLICATIONS.**



Immunofluorescence analysis of U2OS cells using CRABP2 antibody (STJ27930). Blue: DAPI for nuclear staining.



Western blot analysis of extracts of various cell lines, using CRABP2 antibody (STJ27930) at 1:1000 dilution. _Secondary antibody: HRP Goat Anti-Rabbit IgG (H+L) (STJS000856) at 1:10000 dilution. _Lysates/proteins: 25 Mu g per lane. _Blocking buffer: 3% nonfat dry milk in TBST. _Detection: ECL Enhanced Kit. _Exposure time: 30s.