

Anti-GSK3B antibody (320-420) (STJ27912)

GENERAL INFORMATION

Product Type	Primary antibodies
Applications	WB/IF/ICC/IP/ELISA
Host / Source	Rabbit
Reactivity	Human/Mouse/Rat

PRODUCT PROPERTIES

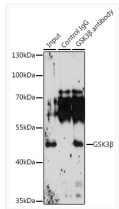
Clonality	Polyclonal
Concentration	Lot specific
Conjugation	Unconjugated
Purification	Affinity purification
Dilution Range	WB:1:500-1:1000 IF/CC:1:50-1:200 IP:0.5 Mu g-4 Mu g antibody for 200 Mu g-400 Mu g extracts of whole cells ELISA:Recommended starting concentration is 1 Mu g/mL. Please optimize the concentration based on your specific assay requirements
Formulation	PBS with 0.09% Sodium Azide, 50% Glycerol, pH 7.3.
Isotype	IgG
Molecular Weight	Protein Mw: 47kDa Observed Mw: 46kDa
Storage Instruction	Store at -20°C for up to 1 year from the date of receipt, and avoid repeat freeze-thaw cycles.

TARGET INFORMATION

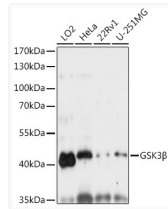
Gene ID	2932
Gene Symbol	GSK3B
UniProt ID	GSK3B_HUMAN
Immunogen Region	320-420
Immunogen Sequence	LLEYTPARLTPLLEACAHSF FDEL RDPNVKLPNGRDTPAL FNFTTQELSSNPPLATILIP PHARIQAAASTPTNATAASD ANTGDRGQTNNAASASASNS T
Specificity	A synthetic peptide corresponding to a sequence within amino acids 320-420 of human GSK3 Beta (NP_001139628.1).

ADDITIONAL INFORMATION

Note **STRICTLY FOR FURTHER SCIENTIFIC RESEARCH USE ONLY (RUO). MUST NOT TO BE USED IN DIAGNOSTIC OR THERAPEUTIC APPLICATIONS.**



Immunoprecipitation analysis of 200 Mu g extracts of 22Rv1 cells, using 3 Mu g GSK3 Beta antibody (STJ27912). Western blot was performed from the immunoprecipitate using GSK3 Beta antibody (STJ27912) at a dilution of 1:1000.



Western blot analysis of various lysates using GSK3 Beta Rabbit polyclonal antibody (STJ27912) at 1:1000 dilution. Secondary antibody: HRP Goat Anti-Rabbit IgG (H+L) (STJS000856) at 1:10000 dilution. Lysates/proteins: 25 Mu g per lane. Blocking buffer: 3% nonfat dry milk in TBST. Detection: ECL Basic Kit. Exposure time: 30s.