

Anti-DAP antibody (1-102) (STJ27903)

GENERAL INFORMATION

Product Type	Primary antibodies
Applications	WB/IHC-P/IF/ICC/ELISA
Host / Source	Rabbit
Reactivity	Human/Mouse/Rat

PRODUCT PROPERTIES

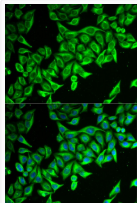
Clonality	Polyclonal
Concentration	Lot specific
Conjugation	Unconjugated
Purification	Affinity purification
Dilution Range	WB:1:500-1:2000 IHC-P:1:50-1:200 IF/CC:1:20-1:100 ELISA:Recommended starting concentration is 1 μ g/mL. Please optimize the concentration based on your specific assay requirements.
Formulation	PBS with 0.02% Sodium Azide, 50% Glycerol, pH 7.3.
Isotype	IgG
Molecular Weight	Protein Mw: 11kDa Observed Mw: 17kDa
Storage Instruction	Store at -20°C for up to 1 year from the date of receipt, and avoid repeat freeze-thaw cycles.

TARGET INFORMATION

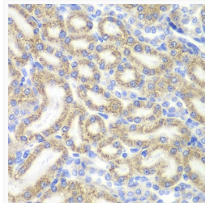
Gene ID	1611
Gene Symbol	DAP
UniProt ID	DAP1_HUMAN
Immunogen Region	1-102
Immunogen Sequence	MSSPPEGKLETKAGHPPAVK AGGMRIVQKHPHTGDTKEEK DKDDQEWESPPPKPTVFIS GVIARGDKDFPPAAAQVAHQ KPHASMDKHPSPRTQHIQQP RK
Specificity	Recombinant fusion protein containing a sequence corresponding to amino acids 1-102 of human DAP (NP_004385.1).

ADDITIONAL INFORMATION

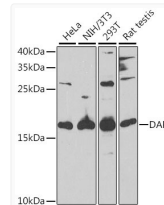
Note **STRICTLY FOR FURTHER SCIENTIFIC RESEARCH USE ONLY (RUO). MUST NOT TO BE USED IN DIAGNOSTIC OR THERAPEUTIC APPLICATIONS.**



Immunofluorescence analysis of MCF-7 cells using DAP antibody (STJ27903). Blue: DAPI for nuclear staining.



Immunohistochemistry analysis of paraffin-embedded rat kidney using DAP antibody (STJ27903) at dilution of 1:200 (40x lens). Perform microwave antigen retrieval with 10 mM PBS buffer pH 7.2 before commencing with immunohistochemistry staining protocol.



Western blot analysis of extracts of various cell lines, using DAP antibody (STJ27903) at 1:1000 dilution. Secondary antibody: HRP Goat Anti-Rabbit IgG (H+L) (STJS000856) at 1:10000 dilution. Lysates/proteins: 25 μ g per lane. Blocking buffer: 3% nonfat dry milk in TBST. Detection: ECL Enhanced Kit. Exposure time: 90s.