

## Anti-SETDB1 antibody (1-397) (STJ27898)

### GENERAL INFORMATION

Product Type	Primary antibodies
Applications	WB/ELISA
Host / Source	Rabbit
Reactivity	Human/Mouse/Rat

### PRODUCT PROPERTIES

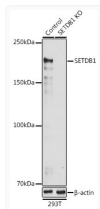
Clonality	Polyclonal
Concentration	Lot specific
Conjugation	Unconjugated
Purification	Affinity purification
Dilution Range	WB:1:500-1:1000 ELISA:Recommended starting concentration is 1 µg/mL. Please optimize the concentration based on your specific assay requirements.
Formulation	PBS with 0.09% Sodium Azide, 50% Glycerol, pH7.3.
Isotype	IgG
Molecular Weight	Protein Mw: 143kDa Observed Mw: 180kDa
Storage Instruction	Store at -20°C for up to 1 year from the date of receipt, and avoid repeat freeze-thaw cycles.

### TARGET INFORMATION

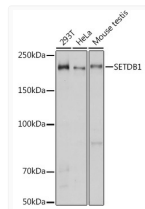
Gene ID	<a href="#">9869</a>
Gene Symbol	<a href="#">SETDB1</a>
UniProt ID	<a href="#">SETB1_HUMAN</a>
Immunogen Region	1-397
Immunogen Sequence	MSSLPGCIGLDAATATVESE EIAELQQAVVEELGISMEEL RHFIDEELKMDCVQQRKKQ LAELETWVIQKESEVAHVDDQ LFDASRAVTNCESLVKDFY SKLGLQYRDSSSEDESSRPT EIIIEPDEDDVLSIDSGDA GSRTPKDQKLRAMAALRKS AQDVQKFMDAVNKKSSSQDL HKGTLSQLMSGELSKDGLIV SMRILGKKRKTWHKGLIA IQTVGPGKYYKVKFDNKGK
Specificity	Recombinant fusion protein containing a sequence corresponding to amino acids 1-397 of human SETDB1 (NP_001230420.1).

### ADDITIONAL INFORMATION

Note **STRICTLY FOR FURTHER SCIENTIFIC RESEARCH USE ONLY (RUO). MUST NOT TO BE USED IN DIAGNOSTIC OR THERAPEUTIC APPLICATIONS.**



Western blot analysis of lysates from wild type (WT) and SETDB1 knockout (KO) 293T cells, using [KO Validated] SETDB1 Rabbit pAb (STJ27898) at 1:1000 dilution.  
 Secondary antibody: HRP-conjugated Goat anti-Rabbit IgG (H+L) (STJS000856) at 1:10000 dilution.  
 Lysates/proteins: 25 µg per lane.  
 Blocking buffer: 3% nonfat dry milk in TBST.  
 Detection: ECL Basic Kit  
 Exposure time: 30s.



Western blot analysis of various lysates using [KO Validated] SETDB1 Rabbit pAb (STJ27898) at 1:1000 dilution.  
 Secondary antibody: HRP-conjugated Goat anti-Rabbit IgG (H+L) (STJS000856) at 1:10000 dilution.  
 Lysates/proteins: 25 µg per lane.  
 Blocking buffer: 3% nonfat dry milk in TBST.  
 Detection: ECL Basic Kit  
 Exposure time: 3s.