

Anti-SMARCC1 antibody (80-320) (STJ27881)

GENERAL INFORMATION

Product Type	Primary antibodies
Applications	WB/IP/ELISA
Host / Source	Rabbit
Reactivity	Human

PRODUCT PROPERTIES

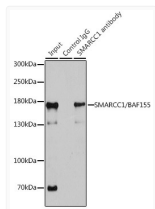
Clonality	Polyclonal
Concentration	Lot specific
Conjugation	Unconjugated
Purification	Affinity purification
Dilution Range	WB:1:500-1:1000 IP:0.5 Mu g-4 Mu g antibody for 200 Mu g extracts of whole cells ELISA:Recommended starting concentration is 1 Mu g/mL. Please optimize the concentration based on your specific assay requirements.
Formulation	PBS with 0.02% Sodium Azide, 50% Glycerol, pH 7.3.
Isotype	IgG
Molecular Weight	Protein Mw: 123kDa Observed Mw: 155kDa
Storage Instruction	Store at -20°C for up to 1 year from the date of receipt, and avoid repeat freeze-thaw cycles.

TARGET INFORMATION

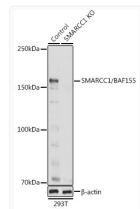
Gene ID	6599
Gene Symbol	SMARCC1
UniProt ID	SMRC1_HUMAN
Immunogen Region	80-320
Immunogen Sequence	LVVQLLQFQEDAFGKHV TNP AFTKLPKCFMDFKAGGALC HILGAAYKYKNEQWRRFDL QNPSRMDRNVEMFMNIEKTL VQNNCLTRPNIYLIPDIDLK LANKLKDIIKRHQGTFTDEK SKASHHIYPYSSSQDDEEWL RPVMRKEKQVLVHWGFYPDS YDTWVHSNDVDAEIEDPPIP EKPWKVHVK WILDTDIFNEW MNEEDYEVDENRKPVSFRQR ISTKNEEPPVRSERRDRKA
Specificity	Recombinant fusion protein containing a sequence corresponding to amino acids 80-320 of human SMARCC1/BAF155 (NP_003065.3).

ADDITIONAL INFORMATION

Note STRICTLY FOR FURTHER SCIENTIFIC RESEARCH USE ONLY (RUO). MUST NOT TO BE USED IN DIAGNOSTIC OR THERAPEUTIC APPLICATIONS.



Immunoprecipitation analysis of 200 Mu g extracts of 293T cells using 1 Mu g SMARCC1/BAF155 antibody (STJ27881). Western blot was performed from the immunoprecipitate using SMARCC1/BAF155 antibody (STJ27881) at a dilution of 1:1000.



Western blot analysis of lysates from wild type (WT) and SMARCC1/BAF155 knockout (KO) 293T cells, using [KO Validated] SMARCC1/BAF155 Rabbit polyclonal antibody (STJ27881) at 1:1000 dilution. Secondary antibody: HRP Goat Anti-Rabbit IgG (H+L) (STJS000856) at 1:10000 dilution. Lysates/proteins: 25 Mu g per lane. Blocking buffer: 3% nonfat dry milk in TBST. Detection: ECL Basic Kit. Exposure time: 1s.