

## Anti-PRPF4 antibody (1-260) (STJ27846)

### GENERAL INFORMATION

Product Type	Primary antibodies
Applications	WB/IHC-P/ELISA
Host / Source	Rabbit
Reactivity	Human/Mouse/Rat

### PRODUCT PROPERTIES

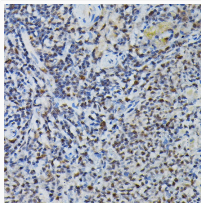
Clonality	Polyclonal
Concentration	Lot specific
Conjugation	Unconjugated
Purification	Affinity purification
Dilution Range	WB:1:500-1:2000 IHC-P:1:50-1:200 ELISA:Recommended starting concentration is 1 µg/mL. Please optimize the concentration based on your specific assay requirements.
Formulation	PBS with 0.02% Sodium Azide, 50% Glycerol, pH 7.3.
Isotype	IgG
Molecular Weight	Protein Mw: 58kDa Observed Mw: 58kDa
Storage Instruction	Store at -20°C for up to 1 year from the date of receipt, and avoid repeat freeze-thaw cycles.

### TARGET INFORMATION

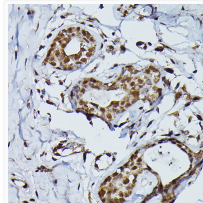
Gene ID	<a href="#">9128</a>
Gene Symbol	<a href="#">PRPF4</a>
UniProt ID	<a href="#">PRP4_HUMAN</a>
Immunogen Region	1-260
Immunogen Sequence	MASSRASSTQATKTKAPDDL VAPVVKKPHIYYGSLEEKER ERLAKGESGILGDKLKGAGI EAGNINITSGEVFEIEEHS ERQAEVLAEFERRKRARQIN VSTDSEVKACLALGEPIT LFGEGPAERRERLRNLSVV GTDALKKTKKDKDEKSKSKE EYQQTWYHEGPNLSKVARLW IANYSLPRAMKRLLEEARLHK EIPETTRTSQMQLHKSLSRS LNNFCSQIGDDRPISYCHF
Specificity	Recombinant fusion protein containing a sequence corresponding to amino acids 1-260 of human PRPF4 (NP_004688.2).

### ADDITIONAL INFORMATION

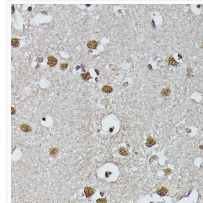
Note **STRICTLY FOR FURTHER SCIENTIFIC RESEARCH USE ONLY (RUO). MUST NOT TO BE USED IN DIAGNOSTIC OR THERAPEUTIC APPLICATIONS.**



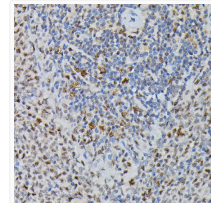
Immunohistochemistry analysis of paraffin-embedded mouse spleen using PRPF4 Rabbit polyclonal antibody (STJ27846) at dilution of 1:200 (40x lens). Perform high pressure antigen retrieval with 10 mM citrate buffer pH 6.0 before commencing with immunohistochemistry staining protocol.



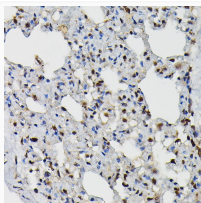
Immunohistochemistry analysis of paraffin-embedded human breast cancer using PRPF4 Rabbit polyclonal antibody (STJ27846) at dilution of 1:200 (40x lens). Perform high pressure antigen retrieval with 10 mM citrate buffer pH 6.0 before commencing with immunohistochemistry staining protocol.



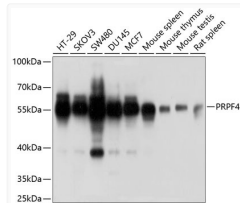
Immunohistochemistry analysis of paraffin-embedded human brain using PRPF4 Rabbit polyclonal antibody (STJ27846) at dilution of 1:200 (40x lens). Perform high pressure antigen retrieval with 10 mM citrate buffer pH 6.0 before commencing with immunohistochemistry staining protocol.



Immunohistochemistry analysis of paraffin-embedded rat spleen using PRPF4 Rabbit polyclonal antibody (STJ27846) at dilution of 1:200 (40x lens). Perform high pressure antigen retrieval with 10 mM citrate buffer pH 6.0 before commencing with immunohistochemistry staining protocol.



Immunohistochemistry analysis of paraffin-embedded rat lung using PRPF4 Rabbit polyclonal antibody (STJ27846) at dilution of 1:200 (40x lens). Perform high pressure antigen retrieval with 10 mM citrate buffer pH 6.0 before commencing with immunohistochemistry staining protocol.



Western blot analysis of extracts of various cell lines, using PRPF4 antibody (STJ27846) at 1:1000 dilution. Secondary antibody: HRP Goat Anti-Rabbit IgG (H+L) (STJS000856) at 1:10000 dilution. Lysates/proteins: 25 µg per lane. Blocking buffer: 3% nonfat dry milk in TBST. Detection: ECL Basic Kit. Exposure time: 1s.