

## Anti-STRAP antibody (1-350) (STJ27760)

### GENERAL INFORMATION

Product Type	Primary antibodies
Applications	WB/IF/ICC/ELISA
Host / Source	Rabbit
Reactivity	Human/Mouse/Rat

### PRODUCT PROPERTIES

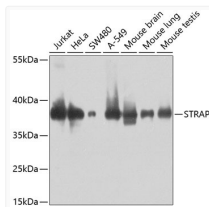
Clonality	Polyclonal
Concentration	Lot specific
Conjugation	Unconjugated
Purification	Affinity purification
Dilution Range	WB:1:500-1:1000 IF/CC:1:50-1:200 ELISA:Recommended starting concentration is 1 Mu g/mL. Please optimize the concentration based on your specific assay requirements.
Formulation	PBS with 0.02% Sodium Azide, 50% Glycerol, pH 7.3.
Isotype	IgG
Molecular Weight	Protein Mw: 38kDa Observed Mw: 39kDa
Storage Instruction	Store at -20°C for up to 1 year from the date of receipt, and avoid repeat freeze-thaw cycles.

### TARGET INFORMATION

Gene ID	<a href="#">11171</a>
Gene Symbol	<a href="#">STRAP</a>
UniProt ID	<a href="#">STRAP_HUMAN</a>
Immunogen Region	1-350
Immunogen Sequence	MAMRQTPLTCSGHTRPVVDL AFSGITPYGYFLISACKDGK PMLRQGDGTGDWIGTFLGHKG AVWGATLNKDATKAATAAAD FTAKVWDAVSGDELMTLAHK HIVKTVDFTQDSNYLLTGQG DKLLRIYDLNKPEAEPKEIS GHTSGIKKALWCSEDKQILS ADDKTVRLWDHATMTEVKSL NFMNSVSSMEYIPEGEILVI TYGRSIAFHSAVSLDPIKSF EAPATINSASLHPEKEFLV
Specificity	Recombinant fusion protein containing a sequence corresponding to amino acids 1-350 of human STRAP (NP_009109.3).

### ADDITIONAL INFORMATION

Note STRICTLY FOR FURTHER SCIENTIFIC RESEARCH USE ONLY (RUO). MUST NOT TO BE USED IN DIAGNOSTIC OR THERAPEUTIC APPLICATIONS.



Western blot analysis of extracts of various cell lines, using STRAP antibody (STJ27760) at 1:1000 dilution. Secondary antibody: HRP Goat Anti-rabbit IgG (H+L) at 1:10000 dilution. Lysates/proteins: 25ug per lane. Blocking buffer: 3% non-fat dry milk in TBST. Detection: ECL Basic Kit. Exposure time: 15s.