

Anti-CSDE1 antibody (369-600) (STJ27737)

GENERAL INFORMATION

Product Type	Primary antibodies
Applications	WB/IF/ICC/IP/ELISA
Host / Source	Rabbit
Reactivity	Human/Mouse

PRODUCT PROPERTIES

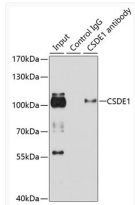
Clonality	Polyclonal
Concentration	Lot specific
Conjugation	Unconjugated
Purification	Affinity purification
Dilution Range	WB:1:500-1:1000 IF/CC:1:50-1:200 IP:0.5 Mu g-4 Mu g antibody for 200 Mu g-400 Mu g extracts of whole cells ELISA:Recommended starting concentration is 1 Mu g/mL. Please optimize the concentration based on your specific assay requirements
Formulation	PBS with 0.02% Sodium Azide, 50% Glycerol, pH 7.3.
Isotype	IgG
Molecular Weight	Protein Mw: 89kDa Observed Mw: 89kDa
Storage Instruction	Store at -20°C for up to 1 year from the date of receipt, and avoid repeat freeze-thaw cycles.

TARGET INFORMATION

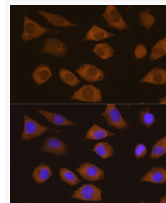
Gene ID	7812
Gene Symbol	CSDE1
UniProt ID	CSDE1_HUMAN
Immunogen Region	369-600
Immunogen Sequence	LSAQRNHAIRIKKLPKGTYS FHSKSDHRFLGTVKEATFS NPKTTSPNKGKEKEAEDGII AYDDCGVKLTIAFQAKDVEG STSPQIGDKVEFSISDKQRP GQQVATCVRLGRNSNSKRL LG YVATLKD NFGFIETANHD KEIFFHYSEFSGD VDSLELG DMVEYLSKGGKGNK VSAEKV NKTHSVNGITEEADPTIYSG KVIRPLRSVDP TQTEYQGM I EIVEEGDMKGEV
Specificity	Recombinant fusion protein containing a sequence corresponding to amino acids 369-600 of human CSDE1 (NP_009089.4).

ADDITIONAL INFORMATION

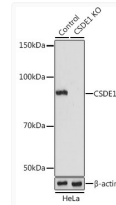
Note STRICTLY FOR FURTHER SCIENTIFIC RESEARCH USE ONLY (RUO). MUST NOT TO BE USED IN DIAGNOSTIC OR THERAPEUTIC APPLICATIONS.



Immunoprecipitation analysis of 100 Mu g extracts of HeLa cells using 3 Mu g CSDE1 antibody (STJ27737). Western blot was performed from the immunoprecipitate using CSDE1 antibody (STJ27737) at a dilution of 1:1000.



Immunofluorescence analysis of L929 cells using CSDE1 Rabbit polyclonal antibody (STJ27737) at dilution of 1:100. Secondary antibody: Cy3 Goat Anti-Rabbit IgG (H+L) at 1:500 dilution. Blue: DAPI for nuclear staining.



Western blot analysis of lysates from wild type (WT) and CSDE1 knockout (KO) HeLa cells, using [KO Validated] CSDE1 Rabbit polyclonal antibody (STJ27737) at 1:1000 dilution. Secondary antibody: HRP Goat Anti-Rabbit IgG (H+L) (STJS000856) at 1:10000 dilution. Lysates/proteins: 25 Mu g per lane. Blocking buffer: 3% nonfat dry milk in TBST. Detection: ECL Basic Kit. Exposure time: 15s.