

Anti-PTGDS antibody (23-190) (STJ27680)

GENERAL INFORMATION

Product Type	Primary antibodies
Applications	WB/IF/ICC/ELISA
Host / Source	Rabbit
Reactivity	Human/Mouse/Rat

PRODUCT PROPERTIES

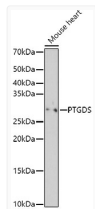
Clonality	Polyclonal
Concentration	Lot specific
Conjugation	Unconjugated
Purification	Affinity purification
Dilution Range	WB:1:100-1:500 IF/CC:1:50-1:100 ELISA:Recommended starting concentration is 1 Mu g/mL. Please optimize the concentration based on your specific assay requirements.
Formulation	PBS with 0.02% Sodium Azide, 50% Glycerol, pH 7.3.
Isotype	IgG
Molecular Weight	Protein Mw: 21kDa Observed Mw: 28kDa
Storage Instruction	Store at -20°C for up to 1 year from the date of receipt, and avoid repeat freeze-thaw cycles.

TARGET INFORMATION

Gene ID	5730
Gene Symbol	PTGDS
UniProt ID	PTGDS_HUMAN
Immunogen Region	23-190
Immunogen Sequence	APEAQVSVQPNFQQDKFLGR WFSAGLASNSSWLREKKAAL SMCKSVVAPATDGGGLNLTST FLRKNQCETRTMLLPAGSL GSYSYRSPHWGSTYSVSVVE TDYDQYALLYSQGSKGPGED FRMATLYSRTQTPRAELKEK FTAFCQAQGFTEDTIVFLPQ TDKCMTEQ
Specificity	Recombinant fusion protein containing a sequence corresponding to amino acids 23-190 of human PTGDS (NP_000945.3).

ADDITIONAL INFORMATION

Note **STRICTLY FOR FURTHER SCIENTIFIC RESEARCH USE ONLY (RUO). MUST NOT TO BE USED IN DIAGNOSTIC OR THERAPEUTIC APPLICATIONS.**



Western blot analysis of extracts of Mouse heart, using PTGDS antibody (STJ27680) at 1:500 dilution. Secondary antibody: HRP Goat Anti-Rabbit IgG (H+L) (STJS000856) at 1:10000 dilution. Lysates/proteins: 25 Mu g per lane. Blocking buffer: 3% nonfat dry milk in TBST. Detection: ECL Basic Kit. Exposure time: 180s.