

Anti-FH antibody (45-510) (STJ27655)

GENERAL INFORMATION

Product Type	Primary antibodies
Applications	WB/IHC-P/IF/ICC/ELISA
Host / Source	Rabbit
Reactivity	Human/Mouse/Rat

PRODUCT PROPERTIES

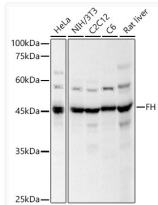
Clonality	Polyclonal
Concentration	Lot specific
Conjugation	Unconjugated
Purification	Affinity purification
Dilution Range	WB:1:500-1:1000 IHC-P:1:50-1:200 IF/CC:1:50-1:100 ELISA:Recommended starting concentration is 1 Mu g/mL. Please optimize the concentration based on your specific assay requirements.
Formulation	PBS with 0.02% Sodium Azide, 50% Glycerol, pH 7.3.
Isotype	IgG
Molecular Weight	Protein Mw: 55kDa Observed Mw: 47kDa
Storage Instruction	Store at -20°C for up to 1 year from the date of receipt, and avoid repeat freeze-thaw cycles.

TARGET INFORMATION

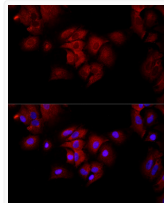
Gene ID	2271
Gene Symbol	FH
UniProt ID	FUMH_HUMAN
Immunogen Region	45-510
Immunogen Sequence	ASQNSFRIEYDTFGELKVPN DKYYGAQTVRSTMNFKIGGV TERMPTPVIKAFGILKRAAA EVNQDYGLDPKIANAIMKAA DEVAEGKLNDFHPLVWVWQTG SGTQTNMNVNEVISNRAIEM LGGELGSKIPVHPNDHVNKS QSSNDTFPTAMHIAAAIEVH EVLLPGLQKLHDALDAKSKE FAQIIKIGRTHTQDAVPLTL GQEFSGYVQQVKYAMTRIKA AMPRIYELAAGGTAVGTGL
Specificity	Recombinant fusion protein containing a sequence corresponding to amino acids 45-510 of human FH (NP_000134.2).

ADDITIONAL INFORMATION

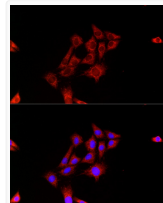
Note STRICTLY FOR FURTHER SCIENTIFIC RESEARCH USE ONLY (RUO). MUST NOT TO BE USED IN DIAGNOSTIC OR THERAPEUTIC APPLICATIONS.



Western blot analysis of various lysates, using FH antibody (STJ27655) at 1:500 dilution. Secondary antibody: HRP Goat Anti-rabbit IgG (H+L) (STJS000856) at 1:10000 dilution. Lysates/proteins: 25 Mu g per lane. Blocking buffer: 3% non-fat dry milk in TBST. Detection: ECL Basic Kit. Exposure time: 5s.



Immunofluorescence analysis of A-549 cells using FH rabbit polyclonal antibody (STJ27655) at dilution of 1:50 (40x lens). Blue: DAPI for nuclear staining.



Immunofluorescence analysis of C6 cells using FH rabbit polyclonal antibody (STJ27655) at dilution of 1:50 (40x lens). Blue: DAPI for nuclear staining.