

## Anti-BMPR2 antibody (27-150) (STJ27633)

### GENERAL INFORMATION

Product Type	Primary antibodies
Applications	WB/IF/ICC/ELISA
Host / Source	Rabbit
Reactivity	Human/Mouse/Rat

### PRODUCT PROPERTIES

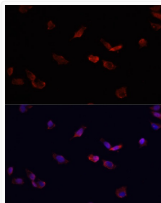
Clonality	Polyclonal
Concentration	Lot specific
Conjugation	Unconjugated
Purification	Affinity purification
Dilution Range	WB:1:500-1:1000 IF/CC:1:50-1:200 ELISA:Recommended starting concentration is 1 Mu g/mL. Please optimize the concentration based on your specific assay requirements.
Formulation	PBS with 0.02% Sodium Azide, 50% Glycerol, pH 7.3.
Isotype	IgG
Molecular Weight	Protein Mw: 115kDa Observed Mw: 100kDa
Storage Instruction	Store at -20°C for up to 1 year from the date of receipt, and avoid repeat freeze-thaw cycles.

### TARGET INFORMATION

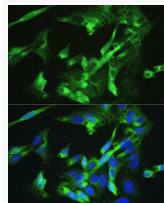
Gene ID	<a href="#">659</a>
Gene Symbol	<a href="#">BMPR2</a>
UniProt ID	<a href="#">BMPR2_HUMAN</a>
Immunogen Region	27-150
Immunogen Sequence	SQNQERLCAFKDPYQQDLGI GESRISHENGTLCSKGSTC YGLWEKSKGDINLVKQGCWS HIGDPQECHYECCVVTTPP SIQNGTYRFCCSTDLNVDN FTENFPPDPTPLSPPHSFN RDET
Specificity	Recombinant fusion protein containing a sequence corresponding to amino acids 27-150 of human BMPR2 (NP_001195.2).

### ADDITIONAL INFORMATION

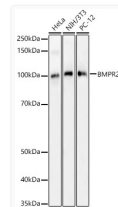
Note STRICTLY FOR FURTHER SCIENTIFIC RESEARCH USE ONLY (RUO). MUST NOT TO BE USED IN DIAGNOSTIC OR THERAPEUTIC APPLICATIONS.



Immunofluorescence analysis of HeLa cells using BMPR2 antibody (STJ27633) at dilution of 1:100. Blue: DAPI for nuclear staining.



Immunofluorescence analysis of U-2OS cells using BMPR2 antibody (STJ27633) at dilution of 1:100. Blue: DAPI for nuclear staining.



Western blot analysis of various lysates, using BMPR2 antibody (STJ27633) at 1:1000 dilution. Secondary antibody: HRP Goat Anti-Rabbit IgG (H+L) (STJS000856) at 1:10000 dilution. Lysates/proteins: 25 Mu g per lane. Blocking buffer: 3% nonfat dry milk in TBST. Detection: ECL Basic Kit. Exposure time: 20s.