

## Anti-ANPEP antibody (668-967) (STJ27629)

### GENERAL INFORMATION

Product Type	Primary antibodies
Applications	WB/IHC-P/IF/ICC/ELISA
Host / Source	Rabbit
Reactivity	Human/Mouse/Rat

### PRODUCT PROPERTIES

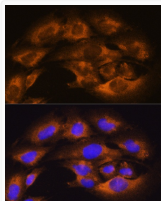
Clonality	Polyclonal
Concentration	Lot specific
Conjugation	Unconjugated
Purification	Affinity purification
Dilution Range	WB:1:500-1:1000 IHC-P:1:50-1:200 IF/CC:1:50-1:100 ELISA:Recommended starting concentration is 1 $\mu$ g/mL. Please optimize the concentration based on your specific assay requirements.
Formulation	PBS with 0.05% Proclin300, 50% Glycerol, pH7.3.
Isotype	IgG
Molecular Weight	Protein Mw: 110kDa Observed Mw: 150kDa
Storage Instruction	Store at -20°C for up to 1 year from the date of receipt, and avoid repeat freeze-thaw cycles.

### TARGET INFORMATION

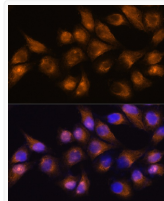
Gene ID	<a href="#">290</a>
Gene Symbol	<a href="#">ANPEP</a>
UniProt ID	<a href="#">AMPN_HUMAN</a>
Immunogen Region	668-967
Immunogen Sequence	LSAAHKVPVTLALNNTLFLI EERQYMPWEAALSLSYFKL MFDRESEVYGPMPKNYLKKQVT PLFIHFRNNTNNWREIPENL MDQYSEVNAISTACSNQVPE CEEMVSGLFKQWMENPNNNP IHPNLRSTVYCNAIAQGGEE EWDFAWEQFRNATLVNEADK LRAALACSKELWILNRYLSY TLNPDLIRKQDATSTIISIT NNVIGQGLVWDFVQSNWKKL FNDYGGGSFSSNLIQAVT
Specificity	Recombinant fusion protein containing a sequence corresponding to amino acids 668-967 of human CD13/CD13/ANPEP (NP_001141.2).

### ADDITIONAL INFORMATION

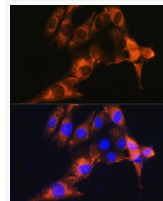
Note	STRICTLY FOR FURTHER SCIENTIFIC RESEARCH USE ONLY (RUO). MUST NOT TO BE USED IN DIAGNOSTIC OR THERAPEUTIC APPLICATIONS.
------	---



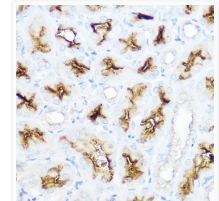
Immunofluorescence analysis of C6 cells using CD13/CD13/ANPEP Rabbit polyclonal antibody (STJ27629) at dilution of 1:100. Blue: DAPI for nuclear staining.



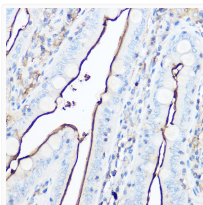
Immunofluorescence analysis of HeLa cells using CD13/CD13/ANPEP Rabbit polyclonal antibody (STJ27629) at dilution of 1:100. Blue: DAPI for nuclear staining.



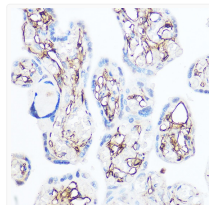
Immunofluorescence analysis of NIH/3T3 cells using CD13/CD13/ANPEP Rabbit polyclonal antibody (STJ27629) at dilution of 1:100. Blue: DAPI for nuclear staining.



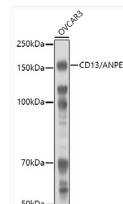
Immunohistochemistry analysis of paraffin-embedded rat kidney using CD13/ANPEP Rabbit polyclonal antibody (STJ27629) at dilution of 1:50 (40x lens). Perform high pressure antigen retrieval with 10 mM citrate buffer pH 6.0 before commencing with immunohistochemistry staining protocol.



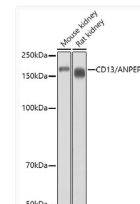
Immunohistochemistry analysis of paraffin-embedded mouse intestine using CD13/ANPEP Rabbit polyclonal antibody (STJ27629) at dilution of 1:50 (40x lens). Perform high pressure antigen retrieval with 10 mM citrate buffer pH 6.0 before commencing with immunohistochemistry staining protocol.



Immunohistochemistry analysis of paraffin-embedded human placenta using CD13/ANPEP Rabbit polyclonal antibody (STJ27629) at dilution of 1:50 (40x lens). Perform high pressure antigen retrieval with 10 mM citrate buffer pH 6.0 before commencing with immunohistochemistry staining protocol.



Western blot analysis of extracts of OVCAR3 cells, using CD13/ANPEP antibody (STJ27629) at 1:1000 dilution. Secondary antibody: HRP Goat Anti-Rabbit IgG (H+L) (STJS000856) at 1:10000 dilution. Lysates/proteins: 25  $\mu$ g per lane. Blocking buffer: 3% nonfat dry milk in TBST. Detection: ECL Basic Kit. Exposure time: 180s.



Western blot analysis of extracts of various cell lines, using CD13/ANPEP antibody (STJ27629) at 1:1000 dilution. Secondary antibody: HRP Goat Anti-Rabbit IgG (H+L) (STJS000856) at 1:10000 dilution. Lysates/proteins: 25  $\mu$ g per lane. Blocking buffer: 3% nonfat dry milk in TBST. Detection: ECL Basic Kit. Exposure time: 10s.