

Anti-SMAD4 antibody (320-552) (STJ27624)

GENERAL INFORMATION

| | |
|---------------|-----------------------|
| Product Type | Primary antibodies |
| Applications | WB/IHC-P/IF/ICC/ELISA |
| Host / Source | Rabbit |
| Reactivity | Human/Mouse/Rat |

PRODUCT PROPERTIES

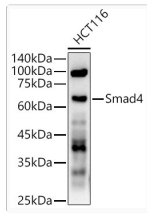
| | |
|---------------------|---|
| Clonality | Polyclonal |
| Concentration | Lot specific |
| Conjugation | Unconjugated |
| Purification | Affinity purification |
| Dilution Range | WB:1:500-1:2000 IHC-P:1:50-1:200 IF/ICC:1:50-1:200 ELISA:Recommended starting concentration is 1 µg/mL. Please optimize the concentration based on your specific assay requirements. |
| Formulation | PBS with 0.05% Proclin300, 50% Glycerol, pH 7.3. |
| Isotype | IgG |
| Molecular Weight | Protein Mw: 60kDa Observed Mw: 63kDa |
| Storage Instruction | Store at -20°C for up to 1 year from the date of receipt, and avoid repeat freeze-thaw cycles. |

TARGET INFORMATION

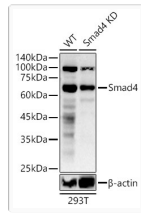
| | |
|--------------------|--|
| Gene ID | 4089 |
| Gene Symbol | SMAD4 |
| UniProt ID | SMAD4_HUMAN |
| Immunogen Region | 320-552 |
| Immunogen Sequence | PEYWCSIA YFEMDVQVGETF KVPSSCPIVTV DGYVDPSSG DRFCLGQLSNVHRTEAIERA RLHIGKGVQLECKGEGDVVW RCLSDHAVFVQSYLDREAG RAPGDVAVHKIYPSAYIKVFD LRQCHRQMQQAATAQAAAA AQAAAVAGNIPGPGSVGGIA PAISLSAAAGIGVDDLRRRLC ILRMSFVKGWGPDYPRQSIK ETPCWIEIHLHRLQLLDEV LHTMPIADPQPLD |
| Specificity | Recombinant fusion protein containing a sequence corresponding to amino acids 320-552 of human Smad4 (NP_005350.1). |

ADDITIONAL INFORMATION

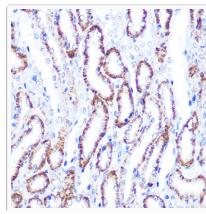
| | |
|------|---|
| Note | STRICTLY FOR FURTHER SCIENTIFIC RESEARCH USE ONLY (RUO). MUST NOT TO BE USED IN DIAGNOSTIC OR THERAPEUTIC APPLICATIONS. |
|------|---|



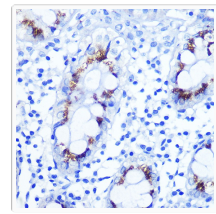
Western blot analysis of lysates from HCT116 cells, using Smad4 Rabbit pAb (STJ27624) at 1:600 dilution.
Secondary antibody: HRP-conjugated Goat anti-Rabbit IgG (H+L) (STJS000856) at 1:10000 dilution.
Lysates/proteins: 25 Mu g per lane.
Blocking buffer: 3% nonfat dry milk in TBST.
Detection: ECL Basic Kit
Exposure time: 30s.



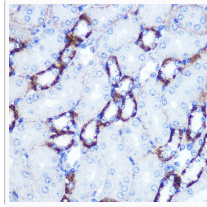
Western blot analysis of lysates from wild type (WT) and Smad4 knockdown (KD) 293T cells, using Smad4 Rabbit pAb (STJ27624) at 1:600 dilution.
Secondary antibody: HRP-conjugated Goat anti-Rabbit IgG (H+L) (STJS000856) at 1:10000 dilution.
Lysates/proteins: 25 Mu g per lane.
Blocking buffer: 3% nonfat dry milk in TBST.
Detection: ECL Basic Kit
Exposure time: 30s.



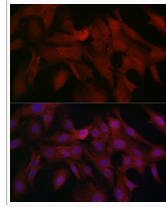
Immunohistochemistry analysis of paraffin-embedded Rat kidney using Smad4 Rabbit pAb (STJ27624) at dilution of 1:100 (40x lens).
Microwave antigen retrieval performed with 0.01M PBS Buffer (pH 7.2) prior to immunohistochemistry staining.



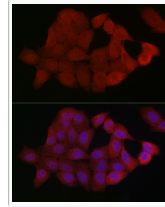
Immunohistochemistry analysis of paraffin-embedded Human colon using Smad4 Rabbit pAb (STJ27624) at dilution of 1:100 (40x lens).
Microwave antigen retrieval performed with 0.01M PBS Buffer (pH 7.2) prior to immunohistochemistry staining.



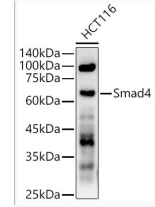
Immunohistochemistry analysis of paraffin-embedded Mouse kidney using Smad4 Rabbit pAb (STJ27624) at dilution of 1:100 (40x lens).
Microwave antigen retrieval performed with 0.01M PBS Buffer (pH 7.2) prior to immunohistochemistry staining.



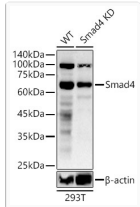
Immunofluorescence analysis of C6 cells using Smad4 Rabbit pAb (STJ27624) at dilution of 1:50 (40x lens).
Secondary antibody: Cy3-conjugated Goat anti-Rabbit IgG (H+L) (STJS001166) at 1:500 dilution. Blue: DAPI for nuclear staining.



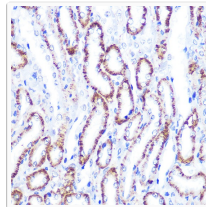
Immunofluorescence analysis of HeLa cells using Smad4 Rabbit pAb (STJ27624) at dilution of 1:50 (40x lens).
Secondary antibody: Cy3-conjugated Goat anti-Rabbit IgG (H+L) (STJS001166) at 1:500 dilution. Blue: DAPI for nuclear staining.



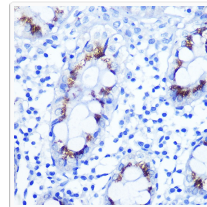
Western blot analysis of lysates from HCT116 cells, using Smad4 Rabbit pAb (STJ27624) at 1:600 dilution.
Secondary antibody: HRP-conjugated Goat anti-Rabbit IgG (H+L) (STJS000856) at 1:10000 dilution.
Lysates/proteins: 25 Mu g per lane.
Blocking buffer: 3% nonfat dry milk in TBST.
Detection: ECL Basic Kit
Exposure time: 30s.



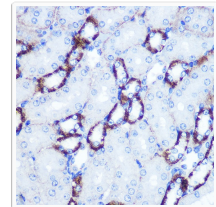
Western blot analysis of lysates from wild type (WT) and Smad4 knockdown (KD) 293T cells, using Smad4 Rabbit pAb (STJ27624) at 1:600 dilution.
Secondary antibody: HRP-conjugated Goat anti-Rabbit IgG (H+L) (STJS000856) at 1:10000 dilution.
Lysates/proteins: 25 Mu g per lane.
Blocking buffer: 3% nonfat dry milk in TBST.
Detection: ECL Basic Kit
Exposure time: 30s.



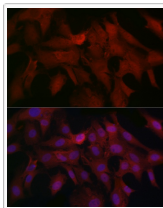
Immunohistochemistry analysis of paraffin-embedded Rat kidney using Smad4 Rabbit pAb (STJ27624) at dilution of 1:100 (40x lens).
Microwave antigen retrieval performed with 0.01M PBS Buffer (pH 7.2) prior to immunohistochemistry staining.



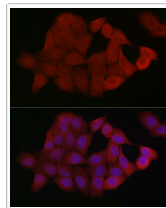
Immunohistochemistry analysis of paraffin-embedded Human colon using Smad4 Rabbit pAb (STJ27624) at dilution of 1:100 (40x lens).
Microwave antigen retrieval performed with 0.01M PBS Buffer (pH 7.2) prior to immunohistochemistry staining.



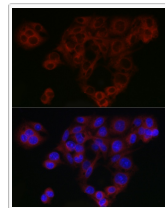
Immunohistochemistry analysis of paraffin-embedded Mouse kidney using Smad4 Rabbit pAb (STJ27624) at dilution of 1:100 (40x lens).
Microwave antigen retrieval performed with 0.01M PBS Buffer (pH 7.2) prior to immunohistochemistry staining.



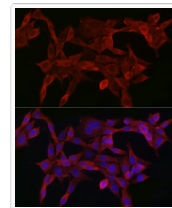
Immunofluorescence analysis of C6 cells using Smad4 Rabbit pAb (STJ27624) at dilution of 1:50 (40x lens).
Secondary antibody: Cy3-conjugated Goat anti-Rabbit IgG (H+L) (STJS001166) at 1:500 dilution. Blue: DAPI for nuclear staining.



Immunofluorescence analysis of HeLa cells using Smad4 Rabbit pAb (STJ27624) at dilution of 1:50 (40x lens).
Secondary antibody: Cy3-conjugated Goat anti-Rabbit IgG (H+L) (STJS001166) at 1:500 dilution. Blue: DAPI for nuclear staining.



Immunofluorescence analysis of HepG2 cells using Smad4 Rabbit pAb (STJ27624) at dilution of 1:50 (40x lens).
Secondary antibody: Cy3-conjugated Goat anti-Rabbit IgG (H+L) (STJS001166) at 1:500 dilution. Blue: DAPI for nuclear staining.



Immunofluorescence analysis of NIH/3T3 cells using Smad4 Rabbit pAb (STJ27624) at dilution of 1:50 (40x lens).
Secondary antibody: Cy3-conjugated Goat anti-Rabbit IgG (H+L) (STJS001166) at 1:500 dilution. Blue: DAPI for nuclear staining.