

Anti-CTSG antibody (21-255) (STJ27603)

GENERAL INFORMATION

Product Type	Primary antibodies
Applications	WB/IHC-P/IF/ICC/ELISA
Host / Source	Rabbit
Reactivity	Human/Mouse/Rat

PRODUCT PROPERTIES

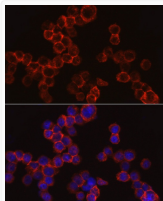
Clonality	Polyclonal
Concentration	Lot specific
Conjugation	Unconjugated
Purification	Affinity purification
Dilution Range	WB:1:100-1:500 IHC-P:1:50-1:200 IF/ICC:1:50-1:200 ELISA:Recommended starting concentration is 1 Mu g/mL. Please optimize the concentration based on your specific assay requirements.
Formulation	PBS with 0.09% Sodium Azide, 50% Glycerol, pH7.3.
Isotype	IgG
Molecular Weight	Protein Mw: 29kDa Observed Mw: 29kDa
Storage Instruction	Store at -20°C for up to 1 year from the date of receipt, and avoid repeat freeze-thaw cycles.

TARGET INFORMATION

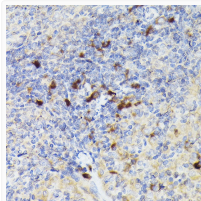
Gene ID	1511
Gene Symbol	CTSG
UniProt ID	CATG_HUMAN
Immunogen Region	21-255
Immunogen Sequence	IIGGRESRPHSRPYMAYLQI QSPAGQSRGGFLVREDFVL TAAHCWGSNINVTLGAHNIQ RRENTQQHITARRAIRHPQY NQRTIQNDIMLLQLSRVRNR NRVNPVALPRAQEGLRPGT LCTVAGWGRVSMRRGTDTLR EVQLRVQDRQCLRIFGSDYD PRRQICVGD RRERKAAAFKGD SGGPLLCCNNVAHGIVSYGKS SGVPPPEVFRVSSFLPWIRT TMRSFKLLDQMETPL
Specificity	Recombinant fusion protein containing a sequence corresponding to amino acids 21-255 of human Cathepsin G (NP_001902.1).

ADDITIONAL INFORMATION

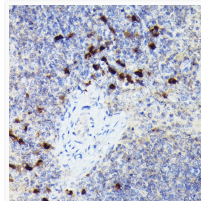
Note STRICTLY FOR FURTHER SCIENTIFIC RESEARCH USE ONLY (RUO). MUST NOT TO BE USED IN DIAGNOSTIC OR THERAPEUTIC APPLICATIONS.



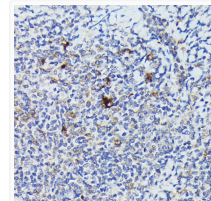
Immunofluorescence analysis of THP-1 cells using Cathepsin G Rabbit polyclonal antibody (STJ27603) at dilution of 1:20 (40x lens). Secondary antibody: Cy3 Goat Anti-Rabbit IgG (H+L) at 1:500 dilution. Blue: DAPI for nuclear staining.



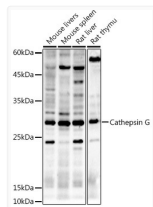
Immunohistochemistry analysis of Cathepsin G in paraffin-embedded rat spleen using Cathepsin G Rabbit polyclonal antibody (STJ27603) at dilution of 1:50 (40x lens). Perform high pressure antigen retrieval with 10 mM citrate buffer pH 6.0 before commencing with immunohistochemistry staining protocol.



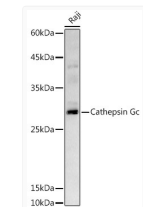
Immunohistochemistry analysis of Cathepsin G in paraffin-embedded mouse spleen using Cathepsin G Rabbit polyclonal antibody (STJ27603) at dilution of 1:50 (40x lens). Perform high pressure antigen retrieval with 10 mM citrate buffer pH 6.0 before commencing with immunohistochemistry staining protocol.



Immunohistochemistry analysis of Cathepsin G in paraffin-embedded human tonsil using Cathepsin G Rabbit polyclonal antibody (STJ27603) at dilution of 1:50 (40x lens). Perform high pressure antigen retrieval with 10 mM citrate buffer pH 6.0 before commencing with immunohistochemistry staining protocol.



Western blot analysis of various lysates using Cathepsin G Rabbit polyclonal antibody (STJ27603) at 1:500 dilution. Secondary antibody: HRP Goat Anti-Rabbit IgG (H+L) (STJS000856) at 1:10000 dilution. Lysates/proteins: 25 Mu g per lane. Blocking buffer: 3% nonfat dry milk in TBST. Detection: ECL Enhanced Kit. Exposure time: 180s.



Western blot analysis of lysates from Raji cells, using Cathepsin G Rabbit polyclonal antibody (STJ27603) at 1:500 dilution. Secondary antibody: HRP Goat Anti-Rabbit IgG (H+L) (STJS000856) at 1:10000 dilution. Lysates/proteins: 25 Mu g per lane. Blocking buffer: 3% nonfat dry milk in TBST. Detection: ECL Basic Kit. Exposure time: 180s.