

Anti-CRYBB2 antibody (1-205) (STJ27543)

GENERAL INFORMATION

Product Type	Primary antibodies
Applications	WB/ELISA
Host / Source	Rabbit
Reactivity	Human/Mouse/Rat

PRODUCT PROPERTIES

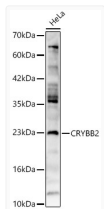
Clonality	Polyclonal
Concentration	Lot specific
Conjugation	Unconjugated
Purification	Affinity purification
Dilution Range	WB:1:500-1:2000 ELISA:Recommended starting concentration is 1 µg/mL. Please optimize the concentration based on your specific assay requirements.
Formulation	PBS with 0.02% Sodium Azide, 50% Glycerol, pH 7.3.
Isotype	IgG
Molecular Weight	Protein Mw: 23kDa Observed Mw: 25kDa
Storage Instruction	Store at -20°C for up to 1 year from the date of receipt, and avoid repeat freeze-thaw cycles.

TARGET INFORMATION

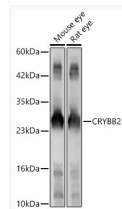
Gene ID	1415
Gene Symbol	CRYBB2
UniProt ID	CRBB2_HUMAN
Immunogen Region	1-205
Immunogen Sequence	MASDHQTQAGKPKQSLNPKII IFEQENFQGHSHELNGPCPN LKETGVEKAGSVLVQAGPWV GYEQANCKGEOQVFVEKGEYP RWDSWTSSRRTDSLSSLRPI KVDSQEHKIILYENPNFTGK KMEIIDDVPSFHAHGYQEK VSSVRVQSGTWVGYQYPGYR GLQYLLEKGDYKSSDFGAP HPQVQSVRRIRDMQWHQRGA FHPSN
Specificity	Recombinant fusion protein containing a sequence corresponding to amino acids 1-205 of human CRYBB2 (NP_000487.1).

ADDITIONAL INFORMATION

Note **STRICTLY FOR FURTHER SCIENTIFIC RESEARCH USE ONLY (RUO). MUST NOT TO BE USED IN DIAGNOSTIC OR THERAPEUTIC APPLICATIONS.**



Western blot analysis of HeLa, using CRYBB2 rabbit polyclonal antibody (STJ27543) at 1:2000 dilution. Secondary antibody: HRP Goat Anti-rabbit IgG (H+L) (STJS000856) at 1:10000 dilution. Lysates/proteins: 25µg per lane. Blocking buffer: 3% non-fat dry milk in TBST. Detection: ECL Enhanced Kit. Exposure time: 60s.



Western blot analysis of various lysates, using CRYBB2 rabbit polyclonal antibody (STJ27543) at 1:2000 dilution. Secondary antibody: HRP Goat Anti-rabbit IgG (H+L) (STJS000856) at 1:10000 dilution. Lysates/proteins: 25µg per lane. Blocking buffer: 3% non-fat dry milk in TBST. Detection: ECL Enhanced Kit. Exposure time: 60s.